



/DOCONF2017//////////
/FACING//////////
/POST/WAR//////////
/URBAN/HERITAGE//////////
/IN/CENTRAL/AND/EASTERN//
/EUROPE//////////

/BOOK/OF/ABSTRACTS//////////

FACING POST-WAR URBAN HERITAGE IN CENTRAL AND EASTERN EUROPE

Doctoral conference organised by the Department of Urban Planning and Design,
Faculty of Architecture, Budapest University of Technology and Economics (BME).
www.urb.bme.hu

chairwoman: Melinda BENKŐ PhD
secretary: Domonkos WETTSTEIN

6-7th October 2017, Budapest, Hungary
1111 Budapest, Műegyetem rkp. 3, 2nd floor, 10

partners /

Faculty of Architecture, BME / Jövő Alap
DANUrB Interreg Transnational Programme
Városépítészeti Alapítvány - NKA, National Cultural Fund of Hungary
Docomomo / ISC Urbanism + Landscape
Hungarian Academy of Sciences, VI. Section of Engineering Sciences, Committee on Architecture: Standing Committee on Urban Sciences

urb/bme

 **Interreg** 
Danube Transnational Programme
DANUrB

do_co,mo_mo_ISC : U+L
International

nka


M Ű E G Y E T E M 1 7 8 2

Scientific Board //////////////////////////////////////

Melinda BENKŐ PhD

Department of Urban Planning and Design, BME, Hungary //////////////////////////////////

Alexandra DJUKIC PhD

Department of Urban Planning and Urban Design, University of Beograd, Serbia //////////////////////////////////

András FERKAI DSc

Institute for Theoretical Studies, Moholy-Nagy University of Art and Design Budapest, Hungary //////////////////////////////////

Mariann FONYÓDI PhD

Department of Urban Planning and Design, BME, Hungary //////////////////////////////////

Miles GLENDINNING PhD

Docomomo ISC U+L, University of Edinburgh, GB Scotland //////////////////////////////////

Anna Agata KANTAREK PhD

Institute of Urban Design, Krakow University of Technology, Poland //////////////////////////////////

Béla KERÉKGYÁRTÓ PhD

Department of Philosophy and History of Science, BME, Hungary //////////////////////////////////

Kornélia KISSFAZEKAS PhD

Department of Urban Planning and Design, BME, Hungary //////////////////////////////////

Kinga M. SZILÁGYI PhD

Department of Garden and Open Space Design, Szent István University, Hungary //////////////////////////////////

Tamás MEGGYESI DSc

Department of Urban Planning and Design, BME, Hungary //////////////////////////////////

Sándor PÁLFY DLA

Department of Urban Planning and Design, BME, Hungary //////////////////////////////////

István SCHNELLER PhD

Department of Urban Planning and Design, Szent István University, Hungary //////////////////////////////////

Árpád SZABÓ DLA

Department of Urban Planning and Design, BME, Hungary //////////////////////////////////

Julianna SZABÓ PhD

Department of Urban Planning and Design, BME, Hungary //////////////////////////////////

David TICHÝ PhD

Atelier Kohout, Faculty of Architecture, Czech Technical University in Prague, Czech Republic //////////////////////////////////

Endre VÁNYOLOS DLA

Department of Urban Planning, Technical University of Cluj-Napoca, Romania //////////////////////////////////

Lubica VITKOVA PhD

Institute of Urban Design and Planning, Slovak University of Technology in Bratislava, Slovak Republic //////////////////////////////////

// FOREWORD //////////////////////////////////////

// MELINDA BENKŐ //////////////////////////////////////

// PhD //////////////////////////////////////

// Department of Urban Planning and Design, Budapest University of Technology and Economics //////////////////////////////////

The Department of Urban Planning and Design (<http://urb.bme.hu/>) of the Faculty of Architecture (<http://architect.bme.hu/>) at Budapest University of Technology and Economics (<http://bme.hu/>) promotes cooperation among Central and Eastern European (CEE) architectural doctoral institutions by building a network for future generations of scholars and academics to facilitate collaboration in their respective fields of urban research. Large-scale ensembles of modernity - results of post-WWII development - pose urban challenges on both sides of the Iron Curtain. DOCONF is a bi-annual doctoral conference series organized by the Department dedicated to this urban heritage in Central and Eastern Europe dividing this main theme into sub-topics such as mass housing neighborhood, urban fabric and landscape transformation, and urban space for reuse.

DOCONF17, the second conference in this series, provides a comparative overview of current doctoral research conducted at different doctoral schools of architecture. The invited chairs of the conference - university scholars, who are architects specialized in urban planning and design – all hail from CEE countries:

- Melinda BENKŐ PhD / Department of Urban Planning and Design
Budapest University of Technology and Economics, Hungary
- Alexandra DJUKIC PhD / Department of Urban Planning and Urban Design
University of Beograd, Serbia
- Bálint KÁDÁR PhD / Department of Urban Planning and Design,
Budapest University of Technology and Economics, Hungary
- Anna Agata KANTAREK PhD / Institute of Urban Design
Krakow University of Technology, Poland
- Árpád SZABÓ DLA / Department of Urban Planning and Design
Budapest University of Technology and Economics, Hungary
- David TICHÝ PhD / Atelier Kohout, Faculty of Architecture
Czech Technical University in Prague, Czech Republic
- Lubica VITKOVA PhD / Institute of Urban Design and Planning
Slovak University of Technology in Bratislava, Slovak Republic

The 32 selected speakers of DOCONF17 – doctoral researchers, PhD candidates and post-doctoral researchers holding a doctorate degree for less than 5 years at the time of the conference – specialized in architecture, urban design, urban planning, landscape architecture or urban history represent fourteen European countries. In addition to theoretical questions, DOCONF17 seeks to find pragmatic approaches when responding to the new challenges of sustainability and when determining what kind of protection tool-kit can address large-scale ensemble problems. Our aim is to discover special similarities and dissimilarities within the Central and Eastern European physical and social environment, to discuss a wide range of research options, to highlight the importance of new ways of thinking about urban heritage in the CEE region. We are also interested in different research methodologies used in architectural doctoral studies: theoretical frameworks, comparative studies, morphological case studies, research by design methodology, etc. After the first and second conferences we know that we made an important step towards recognizing our common research field, reconciling our Central and Eastern European knowledge with that of the West and defining.

/ ACKNOWLEDGEMENT //////////////////////////////////////

The organizers would like to thank the chairs for their support and assistance with this conference series and for their appreciation of the benefits to be gained from this kind of international cooperation. Special thanks also go to the members of the scientific committee, for their advice, counsel, and expertise. The authors would also like to especially thank the speakers, who helped devise the notion of this conference and formulate the agenda. Last, but certainly not least, faculty and students of the Department of Urban Planning and Design at BME, who spent many hours in making sure that DOCONF17 is a success. This conference was made possible through the generous contribution of the “Future Fund” of the BME Faculty of Architecture, the National Cultural Fund of Hungary and the DANUrB Project of the Interreg Danube Transnational Programme.

MELINDA BENKŐ //////////////////////////////////////

Melinda Benkő PhD and habilitated in architecture, associate professor and Head of the Department of Urban Planning and Design at Budapest University of Technology and Economics (BME). Her research, teaching and professional activities focus on contemporary urban design in relation to sustainability and urban heritage – for example, the future of large prefabricated housing estates, energy efficient renewal of historic city centers, different aspects of public space design and use, etc. Ms. Benkő participates in international scientific and educational networks (Erasmus, REA, URBACT, COSTTU1203, Interreg) and plays heads workshops and conferences in Budapest (namely, 2010 Urban Renewal, 2012 Renouvellementurbaine, 2015 Design and Management for Safer Public Spaces, 2015 Housing Estates in V4, and Facing Post-war Urban Heritage in Central and Eastern Europe doctoral conference series).

/ PROGRAMME 

6th October 2017

9:30 – 10:45

/ MASS HOUSING NEIGHBOURHOOD //////////////////////////////////////

/ moderators: David TICHÝ (Cz) - Melinda BENKŐ (H) //////////////////////////////////////

9:30 Jelica JOVANOVIĆ (A-Srb)

Mass Heritage of New Belgrade: HOUSING LABORATORY and so much more

9:45 Balázs GURDON (H)

The Changing Role of the Mass Housing Neighbourhoods in Shrinking Post-Socialist Industrial Cities

10.00 AntoniĆ BRANISLAV (Dr. Eva VANIŠTA LAZAREVIĆ) (Srb)

Decentralised Housing Policy in Socialist Yugoslavia and its Imprint in Multi-family Neighbourhoods

10.15 Nevena NOVAKOVIC (BiH)

Configurational Approach to Revitalisation of Public Life in Mass Housing Neighbourhoods

10.30 Peter HORÁK (Sk)

Urban Fabric of Bratislava after 2nd World War

break

11:00 Tinatin GURGENIDZE (Ge)

The Post-Soviet Mass Housing Neighbourhood Gldani In Tbilisi

11:15 Florian FAURISSON (F)

Towards a Participative Renovation of Bulgarian Communist Housings

11.30 Natalia OTRISHCHENKO (Ukr)

(Re)defining Places for Community in Sykhiv Housing Estate

11.45 Marina CAREVIĆ, Ranka MEDENICA (Srb)

Functional Diversification of Post-war Neighbourhoods

12.00 Karol GÖRNER (Sk)

Slovak Housing Estates and the Accessibility of the Key Amenities

12:15 summary

14:00 – 15.30

/ URBAN FABRIC AND LANDSCAPE TRANSFORMATION //////////////////////////////////////

/ moderators: Lubica VITKOVA (Sk)- Árpád SZABÓ (H) //////////////////////////////////////

14:00 Domonkos WETTSTEIN (H)

Modern Leisurescapes in Erosion: Lesson of the Changing Development Concepts in the Balaton Region (1958-1978)

14:15 Zuzanna NAPIERALSKA (Pl)

Post-war Single Family Settlements from Wrocław: Analysis of their Urban Planning and Present State

14:30 Ana ŠPIRIĆ (Srb)

Industrial Geography in the Function of Industrial Landscape Transformation

14:45 Agnieszka M. WÓJCIK (Pl)

Rzeszów Landscape in Years 1945-1989

15:00 Iva Raič STOJANOVIĆ (Cr)

Parallel Approaches to Post-War Urban Reconstruction in Socialist Croatia

15:15 Nikolai VASSILIEV (Ru)

Sotsgorod in Post-war Soviet Urban Landscape

15:30 summary

16:15 – 18:00

/ URBAN SPACE FOR REUSE //////////////////////////////////////

/ moderators: Agata KANTAREK (Pl) - Árpád SZABÓ (H) //////////////////////////////////////

16:15 Lukáš KOS (Cz)

Brno Regional Centre: „New Heart of the 20th Century City“

16:30 Ivana MARAŠ (Srb)

Reclaiming the Square: the Right to Public Space

16:45 Senada Demirović HABIBIJA (BiH)

Rethinking the Urban space - Case Study Mostar

17:00 Marija CVETKOVIĆ, Nikola DINKIĆ, Dr. Aleksandra DJUKIĆ, Dr. Jugoslav JOKOVIĆ (Srb)

Post_Socialist Shopping Mall as New Gathering Places

17:15 Veronika VICHERKOVÁ (Cz)

The Story of TRANSGAS: the Post-war Monument or a Building Plot

17:30 Gergely HORY (H)

Ephemeral Metamorphosis of the City: Bulky Waste Collection in Budapest

17:45 summary

7th October 2017

9:00 – 12:00

/ DANURB / HERITAGE //////////////////////////////////////

/ moderators: Aleksandra DJUKIC (Srb) - Bálint KÁDÁR (H) //////////////////////////////////////

9:00 Jelena MARIC, Dr. Aleksandra DJUKIC (Srb)

Connecting Centre of Belgrade with Danube and Sava Riverfronts: to Increase Attractiveness

9:15 Regina BALLA (H)

The Impact of Post-War Housing Development on Morphological Changes in Paks

9:30 Ján URBAN, Andrea LACKOVÁ (Sk)

How (not) to Design a Landscape? Process of Planning Before, During, after the Waterworks

9:45 Stefan ŠKORIĆ, Aleksandra MILINKOVIĆ, Dijana BRKLJAČ (Srb)

Reconnection Possibilities of Socialist Neighbourhoods to the Adjacent Danube River in Novi Sad

10:00 Borbála JÁSZ (H)

Hidden Modernism: Architecture Theory of the Socialist Realist Gap

break

10:30 Nataliia MYSAK (Ukr)

(Post-)ideological Mass Housing Landscape: in Search of Preservation Approaches

10:45 Romina DOKAJ, Dr. Anna YUNITSYNA (Alb)

Palaces of Culture: Architectural Heritage of the Communist Period in Albania

11:00 Veneta ZLATINOVA-PAVLOVA (Bg)

Post-War Urban Monuments: Exploring their Impact on the Publics Places in Bulgaria

11:15 Gábor TÓTH (H)

The Nature of the Towers: the Ever-Changing Cityscape in Post-War Hungary

11:30 Vesna TOMIĆ (Srb)

Chances for “Creative City” Turn – Planning Belgrade

11:45 summary

Authors appear in alphabetical order

**DECENTRALISED HOUSING POLICY IN SOCIALIST YUGOSLAVIA
AND ITS IMPRINT IN MULTI-FAMILY NEIGHBOURHOODS**

Branislav ANTONIĆ

PhD candidate

Department of Urbanism, Faculty of Architecture, University of Belgrade, Serbia

www.arh.bg.ac.rs/en

antonice83@gmail.com

Dr. Eva VANIŠTA LAZAREVIĆ

PhD

Department of Urbanism, Faculty of Architecture, University of Belgrade, Serbia

www.evavanistalazarevic.com; www.arh.bg.ac.rs/en/

eva.vanistalazarevic@gmail.com

The unique experiment of socialist state in the second Yugoslavia (1945-1991) had a profound impact in housing policy. Differently than in other socialist countries, decentralisation played a significant role. Housing followed this policy - it was heavily decentralised to regional and local tier. Therefore, these tiers developed and used their own housing norms and standards and thereby had different spatial reflections on urban fabric across Yugoslavia. However, Yugoslavia was still based on socialist ideology. Accordingly, multi-family neighbourhoods were often built for proletariat in Yugoslavia as the most advanced housing type. But, the aforementioned policy also caused decentralisation-led patterns in housing at urban level – these neighbourhoods were more numerous, but also smaller in size and scattered throughout urban area. The aim of this paper is to explain this process and spatial outcomes in multi-family housing through relevant theory and multi-case study. The study is carried on 6 medium-size cities in the northern Serbian province of Vojvodina. They share similar historic and spatial development. Thus, they are an adequate “polygon” to research separate approaches *in situ*, caused by decentralised housing policy. It is expected that the research will embrace how these approaches were reflected in concrete cases and which spatial characteristics can be usable for current trends in Serbian cities.



Typical neighbourhood from late socialism in Sremska Mitrovica, Vojvodina, Serbia (Author: B. Antić)

REFERENCES

- Hirt, S., Stanilov, K. (2014). *Twenty Years of Transition: The Evolution of Urban Planning in Eastern Europe and the Former Soviet Union, 1989-2009*. (Nairobi: UN Habitat)
- Petrović, M. (2004). *Социологија становања / Sociology of Housing*. (Belgrade: Institut za sociološka istraživanja)
- Tsenkova, S. (2005) *Trends and Progress in Housing Reforms in South Eastern Europe*. Paris: Council of Europe Development Bank.

Branislav Antić / Бранислав Антонић

He is a PhD candidate and a researcher-assistant at national research project regarding housing development in Serbia. His scientific interests are urbanism and spatial planning, with focus on the planning of medium-size and small communities and urban dimension of housing, which he realises through research, pedagogical, and practical work. He has made more than 40 scientific contributions at international, regional and local level. He has been active in scientific cooperation, at many conferences and scientific meetings. As a coordinator or member of working team, he has been involved in more than 35 works relating to urban and spatial planning and urban design. Several of them have been awarded. Finally, he has been engaged as external assistant in 20 subjects of the faculty.

Professor: Dr. Eva Vaništa Lazarević

POST-WAR HOUSING DEVELOPMENT IN PAKS: IMPACT ON URBAN MORPHOLOGY

Regina BALLA

PhD student

Department of Urban Planning and Design, Faculty of Architecture

Budapest University of Technology and Economics, Hungary

www.urb.bme.hu

balla.regina@urb.bme.hu

Rivers always had an important contribution to the forming of urban structure and identities of cities. Riverside settlements always possess prominent cultural and economic potentials that affect their urban shaping - Paks, the heavily industrialized Hungarian city on the Danube being no exception. For a long time trading and fishing activities using the river directly on a daily basis generated good job opportunities, which caused population growth that activated the housing market and attracted services. Architecture of riverside cities earlier followed the river form, in this way elements of the city orientated to the natural line of the embankment and had direct connection to the river bank to ensure the seamless flow of exchanging of goods and services. The 20th century fundamentally changed the urban structure of river cities. As the industrial sector that used increasing amounts of water in various ways further evolved many factories looked for places with direct access to the river or in the proximity where water could be transported through aqueducts. Using the river indirectly meant that city centers on rivers could be circumvented and industrial activity could be placed on the outskirts of cities. Nevertheless the river plays the same role in being an agent for mechanisms that affects both urban and demographic processes. During the 70's the characters and morphology of cities completely changed via explosive growth. This industry-caused transformation, in the post 1989 era following the change of the socialist regime and the introduction of free-market economy and including the aftermath of the worldwide financial crisis of 2008 is looking for a new scope in the future urban progress. Paks is a prominent model of this special situation - given that it houses Hungary's one and only nuclear power plant, an establishment that changed the structure of the whole city from 1967 on. This research is investigating how a 70's large industrial development is able to mold morphology of this riverside city. As a city that started to be developed in the post WWII era, Paks gained a housing estate accommodating the workforce of the power plant, showcasing all of the usual service facilities that accompanied estates built during that time. In Paks, the post WWII heritage is determinant even today and plays an important role in how the city operates. The spatial formula of the building stock has definitely changed the city's fabric. The focus of the research is on this spatial formula that defines Paks' character today, in these trying times.



Housing Estate in Paks from Danube

REFERENCES

- Benkő, M. (2014). Evaluating Factors in the Image of Housing Estate, *Periodica Polytechnica Architecture*
- Dénesi, Ö. (1979). Egy születő új város: Paks
- Enyedi, G. (1998). Transformation in Central European Postsocialist Cities (Pécs: Centre for regional studies of Hungarian Academy of Sciences)
- Fürstand, A. (2007). Térszintaktika a településkutatásban, doktori értekezés. (Budapest)
- Laki, I. (2009). Paks, az értékek városa, Duna menti városok. (Budapest, Pallas Kiadó)

Regina Balla (born in 1991)

Regina Balla does her architect PhD at the Budapest University of Technology and Economics specialized in urban planning and development. She graduated from the BME in 2016. During her M.Sc. studies she worked as junior architect in different architecture offices and thanks to international scholarships she spent some months in an architecture studio in Madrid. But since 2013 she has participated in more scientific student conferences and competitions, where her retuning topic was prefabricated block of flats architecture. Accordingly in her PhD she examines sustainability of city blocks, especially prefabricated housing estates in small to mid- sized town. She is interested in, how can balance sustainability and quality of life, if it exists, how urban planning can help to merge these issues for a likable future city.

**FUNCTIONAL DIVERSIFICATION OF POST-WAR NEIGHBOURHOODS
NOVI SAD CASE STUDY**

Marina CAREVIĆ / Ranka MEDENICA

PhD candidate / PhD student

Department of Architecture and Urban Planning, Faculty of Technical Sciences

University of Novi Sad, Serbia

www.arhns.uns.ac.rs

www.ftn.uns.ac.rs/n1386094394/faculty-of-technical-sciences

marinac@uns.ac.rs / ranka.medenica@uns.ac.rs

Political priorities in post-war Yugoslavia, like in other Central and Eastern Europe countries, have led to massive construction of residential areas in cities. These urban quarters were built upon modernist ideas, resulting in monofunctional residential zones – Novi Sad is among Yugoslav cities which witnessed such transformation. As the overall progress in former Yugoslavia has been delivered with delayed effects and consequences, the same characterization could be attributed to the process of urban development in Novi Sad. Conditions for intense expansion of Novi Sad were achieved only in sixties – almost twenty years after the end of the World War II. This paper discuss the mass housing neighbourhoods named Limans in Novi Sad with the specific case study of urban quarter named Liman 3, showing a good example of gradual functional diversification of neighbourhood since post-war period up to present days. Limans are urban quarters situated on left bank of the Danube river and in close proximity to the city centre. Typical morphology of these quarters is fully in line with the urban doctrine of the period in which it occurred. Residents were provided with enough sun, space and greenery, but not all outcomes were good. The older parts of Liman 3, are designed as so called dormitory neighbourhoods, common for the period of mass housing production and with negligible number of non-residential facilities. Only in the late 20th and early 21th century favourable conditions for the construction of significant number of non-residential facilities were created, which resulted in changing the relationship between the uses and functional balance. The research approach of the paper is based on combination of Space Syntax, Spacematrix and Mixed-use index tool, as well as on contextual analysis with the specific interest on societal and economical issues. Aim of the paper is to show how local circumstances joint with global influences, evident in the example of Liman 3 urban area, have induced transition from completely residential to moderately mixed-use neighbourhood during more than 40 years development period.



New and old parts of Liman 3

REFERENCES

- van den Hoek, J. (2009). The Mixed Use Index (MXI) as Planning Tool for (New) Towns in the 21st Century. *New Towns for the 21st Century; the Planned vs. the Unplanned City*, (str. 198-207). Almere, The Netherlands.
- van Nes, A., Berghauser Pont, M., & Mashhoodi, B. (2012). Combination of Space Syntax with Spacematrix and the Mixed Use Index. The Rotterdam South Test Case. *Eighth International Space Syntax Symposium*, (str. 8003:1-29). Santiago de Chile
- Džejkobs, Dž. (Jacobs, J.) (1961/2011). *Smrt i život velikih američkih gradova*. (Novi Sad: Mediterran Publishing.)
- Pušić, L. (2009). *Grad bez lica*. (Novi Sad: Mediterran Publishing)
- Plan detaljne regulacije Limana 3 u Novom Sadu. (2004). *Službeni list Grada Novog Sada*. Novi Sad, Srbija: Službeni list Grada Novog Sada.

Marina Carević (born in 1984)

is a PhD candidate at the Department of Architecture and Urbanism, Faculty of Technical Sciences, University of Novi Sad, with a specific interest on the topic of mixed use development. She is a teaching assistant at the same Department at bachelor and master study programmes on the courses concerning urban planning and design and strategies and methods in urban design. During studies she was a holder of various scholarships, gained several awards for studying results and took part in exchange programs.

Ranka Medenica (born in 1985)

is a PhD student and teaching assistant at the Department of Architecture and Urban Planning, Faculty of Technical Sciences, University of Novi Sad (UNS), Serbia. She holds a diploma degree (BSc) in Sociology from Faculty of Philosophy, UNS (2010) and master degree (MSc) in Regional Development and Planning from Faculty of Technical Sciences, UNS (2013). Her fields of interest are related to the regional development and planning, European policies, sustainable development and spatial aspects of innovation and R&D. She is Erasmus Mundus scholarships holder and she spent one academic year in Centre for European Regional and Local Studies, University of Warsaw as PhD exchange student.

**POST- SOCIALISTIC SHOPPING MALLS AS NEW GATHERING PLACES
CASE STUDY BELGRADE**

Marija CVETKOVIĆ / Nikola DINKIĆ

PhD student / PhD student

Department of Urban Planning, Faculty of Architecture , University of Belgrade, Serbia
Faculty of Electronic Engineering, Department of Computer Science, University of Nis, Serbia

www.arh.bg.ac.rs / www.elfak.ni.ac.rs

marija.cvetk1@gmail.com / dinkicnikola@elfak.rs

Dr. Aleksandra DJUKIĆ / Dr. Jugoslav JOKOVIĆ

adjukic@afrodita.rcub.bg.ac.rs / jugoslav.jokovic@elfak.ni.ac.rs

The dominance of city streets and squares (markets), as primary retail agglomeration, is greatly reduced by construction of shopping malls. The numerous contents of the city center are disappearing along with the opening of the new shopping malls, which are taking the role of open public spaces. Furthermore, cities and their open public spaces are reflections of users changing needs. During the last two decades in Serbia, shopping centers are beginning to dominate the city center and its suburbs, as a visual sign and place for socialization and consumption. This paper explores the built environment of a shopping mall considering perception by its users and measures the intensity of users both in open public spaces and shopping malls. The aim of this paper is to compare the concentration of the users in the selected shopping malls built in New Belgrade and open public spaces in the city center and to compare the preferences consumers have towards shopping malls and public spaces, by determining theirs' opinion on the (dis)advantages of the shopping malls over features of the city center. New Belgrade, post socialist residential area has been transforming into the multifunctional settlement and shopping malls attracted more users on its part of the river. The methodological frameworks of a research are questionnaires, surveys and method of mapping users on social maps (via social networks). Identity of shopping malls versus public places in Belgrade is observed through technical analyses and qualitative surveys using online and on site questionnaires, as well as study of social media (twitter). The target population of this study consisted of mostly young people with their families, due to the fact that they belong to the group of people who are active mall visitors, which was noted by observation in largest Belgrade shopping malls. A structured questionnaire was developed to measure the customers' shopping motivation, both in the shopping mall and in the largest shopping city street in Belgrade, Knez Mihailova Street. The research also used the new developed software application Twitter search engine at University of Niš - Faculty of Electronic engineering which was developed during the PhD course "Advanced topics in data and knowledge engineering". The aim was tracking and measuring the intensity of users in the monitored territory, testing the latest behavioral patterns of them. Twitter is one the most popular data sources for research because of its open network allowing access to information published through the platform. Summarizing and interpreting the collected data obtained the three groups of results: competitiveness of shopping mall with open public space with the focus on the main qualities, measuring the concentration of users both in shopping malls and open public spaces and suggestions for improvement of open public spaces. This research suggests that understanding experiences of contemporary urban change in public space requires a broader performative understanding of users' needs and its qualities.



Concert of Lexington band in Shopping mall Ušće, Belgrade

REFERENCES

- Augé, Marc. (2008). *Non-places*. (London: Verso)
- Crawford, Margaret. (1992) „The World in a Shopping Mall“ u M. Sorkin (Ed.), *Variations on a Theme Park: The New American City and the End of Public Space* (New York: Hill and Wang)
- Gehl, J (2010) *Cities for People*. (Washington: Island Press)
- Goss, Jon. „The "Magic of the Mall": An Analysis of Form, Function, and Meaning in the Contemporary Retail Built Environment“, *Annals of the Association of American Geographers*, Vol. 83, No. 1. (Mar., 1993), pp 18-47.
- Jun-Ming Xu, Kwang-Sung Jun, Xiaojin Zhu, Amy Bellmore: Learning from Bullying Traces in Social Media, 2012 Conference of the North American Chapter of the Association for Computational Linguistics: Human Language Technologies, pages 656–666, (Montréal)

Marija Cvetković (born in 1990)

PhD student and Teaching assistant on Department of Urbanism, University of Belgrade - Faculty of Architecture since 2014. Participated in numerous architectural and urban competitions, co-author of 6 scientific papers in international conference papers on the issue of quality and identity of public and pseudo public spaces of the city.

Nikola Dinkić (born in 1990)

PhD student and researcher at Faculty of Electronic Engineering, University of Nis, Department of Computer Science, with the Scholarship of Serbian Ministry of Science from 2014. His research interests include Artificial intelligence, Geographic information systems, automated systems, Rich Internet Applications. He is co-author of 5 scientific papers in international or national conference papers on the problems of mining and analysing data generated by Twitter social network.

professors: Dr. Aleksandra Đukić and Dr. Jugoslav Jokovic

PALACES OF CULTURE: ARCHITECTURAL HERITAGE OF THE COMMUNIST PERIOD IN ALBANIA

Romina DOKAJ / Dr. Anna YUNITSYNA

M.Arch / Post doctor (2014)

Department of Architecture, Faculty of Architecture and Engineering, Epoka University, Albania

www.epoka.edu.al

ayunitsyna@epoka.edu.al

During the second half of the XX century Albania was a socialist country, which had influenced to its economic development, social and cultural life. Traces of this period can be seen today in urbanism and architecture of the country. The major development had occurred in the city centers, residential districts, and the most of the politically or culturally important buildings such as libraries, schools, banks, hospitals, municipality buildings and palaces of culture were constructed at that time. The palaces of Culture, as a typology, which was taken from Soviet Union, were supposed to generate social and cultural activities and became one of the most important buildings of the city. The study is focused on the architectural analysis of the palaces of culture in Tirana, Durrës and Vlorë. The aim of the work is to describe the architectural typology of the Palace of Culture, to distinguish the main principles of its spatial organization, to find similarities in the architectural design and in urban position of the buildings, to understand, how the specificity of the city had influenced to the building size, its functional program and design. The study is based on the site trips and the analysis of the archive drawings. The analysis of the three case studies is organized in several stages, starting from the comparison of the functional organization of the buildings, proceeding with the specific spaces, such as the concert hall and ending with the analysis of the architectural style of the building, its volumetrical composition, facade organization and materials. The three Palaces of Culture were constructed as the centres of social and cultural life of the cities, and even nowadays their initial meaning is preserved. The work gives an overview of the Palace of Culture building typology, and provides the set of the typical features, which can be adapted for the design of the building with similar functions.



Front facade of the Palace of Culture in Tirana (top), Durres (left) and Vlore (right)

REFERENCES

- Demko J.G., Regulski J. (1987). Socialism and its impact on urban processes and the city. (Urban Geography 8 , 289)
- Enyedi G., (1996). Urbanization under socialism. (Cambridge: Blackwell)
- Zaborowska M. J. (2001). The Height of (Architectural) Seduction: Reading the “Changes” through Stalin's Palace in Warsaw, Poland. (Journal of Architectural Education, p205–p217)

Romina Dokaj

had graduated Master of Architecture program in Epoka University in Albania in 2016.

Anna Yunitsyna

currently works as assistant professor in Epoka University in Albania. Her particular interests of research are flexible housing and parametric design. She completed her PhD in Czech Technical University in Prague in 2014 and Master and Diploma in Architecture – in Germany (2010) and Russia (2007) consequently.

TOWARDS A PARTICIPATIVE RENOVATION OF BULGARIAN COMMUNIST HOUSINGS

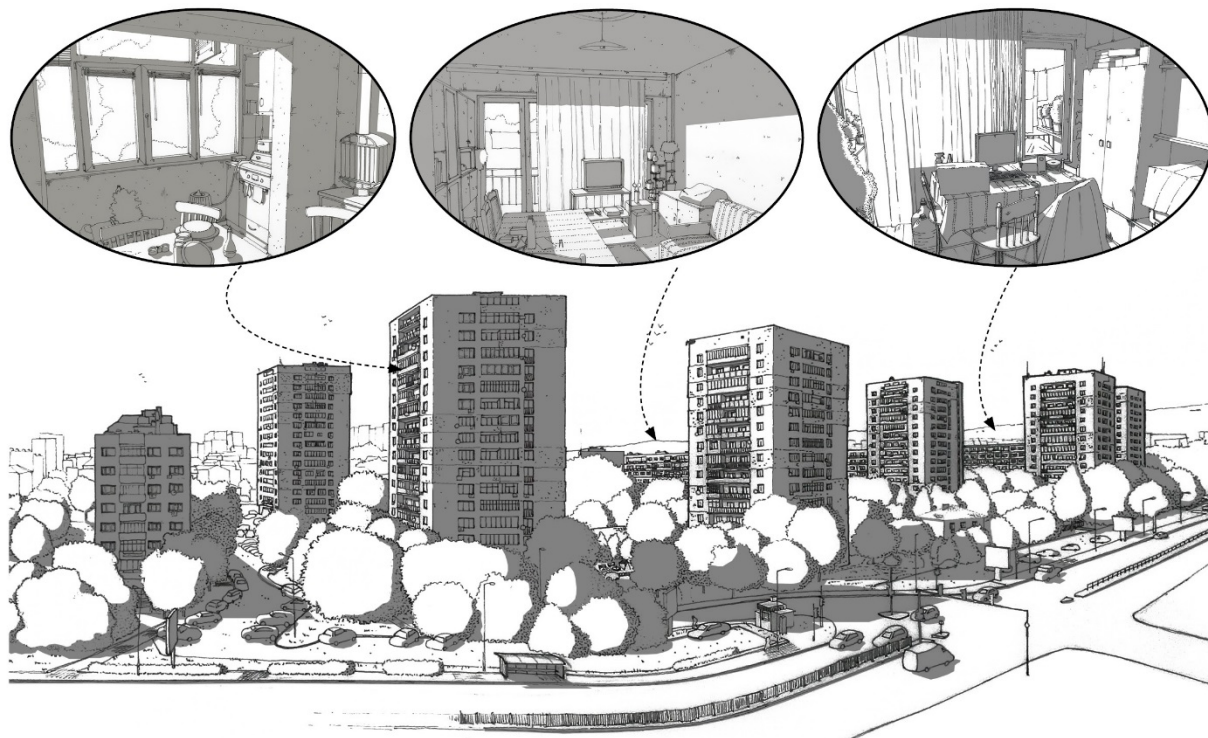
Florian FAURISSON

PhD student

LRA Toulouse, ENSA Toulouse, France

www.lra.toulouse.archi.fr/lra / florian.faurisson@gmail.com

This PhD project takes place inside the scope of European architectural and urban renovation of modern housing in EU and inside the scope of the new laws about citizen participation to urban projects. It aims to interrogate the construction of renovation programs for communist housings in Bulgaria by leading an investigation of the patrimonial potential of those architectural and urban legacies, nowadays totally invisible in urban policies in Bulgaria. Nevertheless Bulgaria is not a well-known country in EU and it is really young compared to others European modern states. It is an historical and cultural crossroad between eastern and western Europe and also the Middle-Orient. Member of the EU since 2007, Bulgaria must face today three main challenges: a phenomenon of urban and human decay, the presence of communist heritages non-recognized in public policies and urban strategies and finally, a large stock of panel housings which needs to be renovated, with a population composed with 90% of owners. Facing those challenges, how to define participative renovation programs of communist housings in Bulgaria? I made the hypothesis that the definition of the concept of modern ordinary legacies can lead us to define the construction of participative renovation programs for communist housings in Bulgaria. Those modern ordinary legacies can be defined as the articulation between the historical study of the architectural and urban modernity in Bulgaria and the recognizing of spatial and social transformations in the *microrayons*. It helps us to define legacies as an articulation of contemporary and historical values which can guide the construction of renovation programs. During this research, our investigation method focused on Varna's *microrayons* in Bulgaria. This method is based on a process of spaces *destratification*, a method using space analysis to study the *designed space*, the *constructed* and the *appropriated space*. This destratification process aims to build a knowledge on the contemporary transformations of communist heritages in Bulgaria, from private space to public space (in-between blocks spaces) passing by collective spaces. Participative and passive observations permit us to put the light on the transformations of communist housings in Bulgaria. My intervention will restore the origins of communist housing in Bulgaria, from 1945 to the late 80's. It will focus on the *designed spaces* evolutions to understand the planification of Bulgarian cities during the second half of XXth century. It will also explore the *constructed spaces*, which are quite different from what has been planned to understand the distance between urban concept and material reality in Bulgaria. It will also put the light on the *appropriated spaces*, the spaces improved and transformed by inhabitants. It will finally leads us to define the frame of the concept of modern ordinary legacies and its application in a program of participative renovation in Troshevo, a *microrayon* of Varna between 2015 and 2016.



REFERENCES

- Guest, M. (2006). *Habiter Sofia au tournant du XXI^e siècle : Essai géographique sur l'aménagement des espaces urbains post-socialistes*. (Lyon : ENS Lettres et Sciences Humaines)
- Löw, M.(2015). *Sociologie de l'espace*. (Paris: Éd. de la Maison des Sciences de l'Homme)
- Meuser, P., Zadorin D. (2015). *Towards a typology of Soviet mass housing: prefabrication in the USSR 1955-1991*. (Berlin: DOM Publishers)
- Ricoeur, P. (2003). *La mémoire, l'histoire, l'oubli*. (Paris: Seuil)
- Znepolski, I. (2008). *Bulgarian communism. Socio-cultural aspects and power trajectory*. (Sofia: Ciela)

Florian Faurisson (born in 1991)

is an Architect, PhD student in Architecture and junior teacher "Cities & Territories" in the National Superior Architecture School of Toulouse (France). He is part of the Architectural Research Laboratory of Toulouse. His research leads him to investigate the social and spatial transformations of modern dwellings in Bulgaria to define the structure of communist legacies in order to develop renovation programs. Recently, his research took the form of an urban renovation project in the city of Varna, with the participation of Veolia Energy Varna, the French Embassy of Bulgaria and the Municipality of Varna, in order to adapt modern architecture to contemporary environmental standards with citizen's participation.

SLOVAK HOUSING ESTATES AND THE ACCESSIBILITY OF THE KEY AMENITIES

Karol GÖRNER

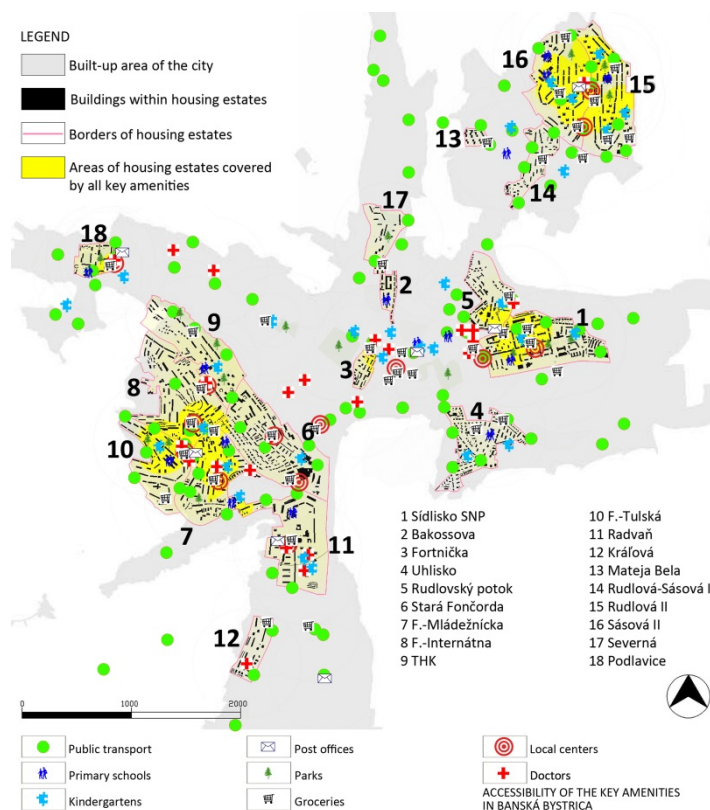
Post-doctor

Institute of Urban Design and Planning, Faculty of Architecture, STU Bratislava, Slovakia

www.fa.stuba.sk

gorner@fa.stuba.sk

Slovak cities, as well as the other cities in the eastern bloc, were marked by a post-war mass housing development. Housing estates, which have emerged practically until the early 90s, ignored the original urban structure, isolated themselves and declared their independence from the rest of the city. An effort to a strict functional segregation, however, caused their dependence on the traditional urban structure. Although the original planes of the housing estates usually proposed the development of the local centers with a relatively broad spectrum of amenities, these were, often under the pressure of solving housing problems, greatly reduced or unfinished. As is known, a functional mixing with an emphasis on the walking accessibility of the key amenities from the place of a residence is one of the important aspects of livable and sustainable neighborhoods. In this context, the question arises: To what extent do housing estates provide the basic functions necessary for the everyday life of their inhabitants? Are they in this respect truly self-sufficient or fail to fulfill their original ambitions? Answering this question is important not only in terms of the evaluation of the quality of these residential complexes, which still form the majority of the Slovak cities housing stock but also for setting strategies for the further development of housing estates (for example, intensification). The goal of the paper was to examine the current structure of settlements in terms of accessibility of the key amenities and the evaluation of the results from the perspective of the future development of housing estates. The research represents the part of dissertation thesis "Intensification of housing estates". The key amenities and optimal walking distances (radius of accessibility) were defined by comparing existing researches and recommendations. The research was carried out within 18 selected housing estates of varying size, nature and location of buildings within the city of Banská Bystrica (county city in Central Slovakia). Within the territory of housing estates, the overall coverage by key amenities (percentage of the territory of the individual housing estate with access to all key amenities in walking distance), the average percentage of coverage of key amenities and percentage of coverage of selected key amenities were assessed. The results of the research demonstrate a large diversity of housing estates in terms of accessibility of key amenities and their relation to other features of housing estates.



The overall coverage by key amenities within the city of Banská Bystrica

REFERENCES

- Gehl, J. (2012). *Města pro lidi*. (Brno: Partnerství)
- Moravčíková, H. et al. (2011). *Bratislava: atlas sídlisk*. (Bratislava: Slovart)
- Stangel, M.(2013). *Kształtowanie współczesnych obszarów miejskich w kontekście zrównoważonego rozwoju*. (Gliwice: Wydawnictwo Politechniki Śląskiej)
- URBAN TASK FORCE (2005). *Towards an Urban Renaissance*. (Taylor & Francis)
- Vitková, L. et al. (2008). *Kvantitatívne parametre urbanistických štruktúr*. (Bratislava: Road)

Karol Görner (born in 1987)

graduated the Faculty of Architecture of the Slovak University of Technology in Bratislava, in the field of Architecture and Urban Planning. Under the leadership of a supervisor, doc. Ing. arch. Ľubica Vitková, PhD., he processed dissertation dealing with the issue of intensification of housing estates. Twice he received a university grant for young researchers, participated in international workshops and as a co-author succeeded in urban design competitions. He currently acts as a post-doctoral researcher at the Institute of Urban Design and Planning at FA STU. He is the author and co-author of several scientific research papers.

THE CHANGING ROLE OF THE MASS HOUSING DISTRICTS IN SHRINKING POST-SOCIALIST INDUSTRIAL CITIES

Balázs GURDON

PhD student

Department of Urban Planning and Design

Budapest University of Technology and Economics, Hungary

<http://www.urb.bme.hu/>

gurdon.balazs@urb.bme.hu

The historical cities of Central and Eastern Europe suddenly grew into big industrial towns in the socialist era. The artificial industrialization caused a rapid increase of the population, and great mass housing neighbourhoods were built around the historical city centre. After the fall of Communism the industrial crash went hand in hand with the dramatic decrease of the population in a lot of cities. The research presents three historical industrial cities of the region: Braşov, Miskolc, Rostock, of which population was constantly shrinking and, according to the forecasts, this trend will not be reserved in the next decades. In these cities this shrinkage is so great (15-35 %), that the rate of the decrease will be critical. The statistics show that the shrinkage is typical mainly in the mass housing districts. These selected cities have special structures, i.e. their urban corpuses were shaped unsymmetrically for some reason. They grew excessively in one direction, so their populations' centre of gravity are located far from the city centre. In these situations, the access paths are much longer between the historical centre and the mass housings, than in similarly large cities which grown in every direction. The research focuses on the potential connection between the distance of the mass housings from the city centre, the scale of the decrease of the mass housing population, and the average property prices. The experience shows that when complaining mass housings closer and further from the city centre, there is a significant difference in terms of the property prices, but the rate of the population decrease is similar. These districts are abandoned without any intervention parallel and this situation is irrational and uneconomical. For the sake of sustainability, it will be inevitable to prioritize when planning reconstructions of these areas. The solution to this problem can be the spatial contraction of these cities to a more compact shape in the future.



The importance of the position of the mass housing neighbourhoods in the whole urban corpus
photo: GoogleEarth

REFERENCES

- Oswalt, P. (2004). *Shrinking Cities Volume 1: International Research* (ISBN 978-3-7757-1481-5)
- Kissfazekas, K., Gurdon, B. (2014). *Urban Corpus Morphology* (Budapest: Építés – Építészettudomány)
- Benkő, M. (2014). *Fate of a Housing estate 1-5*. (Budapest: Régi-Új Magyar Építőművészet)
- Benkő, M. (2016). *Budapest's large prefab housing estates: Urban values of yesterday, today and tomorrow* (Budapest: Hungarian Studies)

Balázs Gurdon (born in 1986) graduated as an architect from the faculty of architecture at Budapest University of Technology and Economics in 2012. Between 2013 and 2017, he has studied PhD at the Pál Csonka Doctoral School of Architecture in BUTE. As a researcher, he investigates the morphological character of Communist-Era industrial cities in Central and Eastern Europe. Balázs is visiting lecturer at the Department of Urban Planning and Design, since 2014 he contributes to the course “Hungarian Cities”. Also, he is co-author and creator of a website that collects and displays the architectural heritage of Communist new towns in Hungary. Since earning his degree, he has worked in various collaborations as an architect. Now he possesses a portfolio of several architectural and urban design projects (master plans, regulation plans, subway and underpass reconstruction plans).

THE POST-SOVIET MASS HOUSING NEIGHBOURHOOD GLDANI IN TBILISI

Tinatin GURGENIDZE

PhD student

Architecture, Built Environment, TU Berlin, Germany

www.code.tu-berlin.de / tikogurgenidze@gmail.com

"So, the aim of that work is to say that architecture is not merely an expression, a mirror, a symbol of a given society or given social structures: it is their »medium«. It has a social activity or positivity." (Delitz 2010) The main question of this work explores the influences and interrelations between the built space and living environs residing in (Post) Soviet Micro Districts (Micro Rayons). The work concentrates on the periphery settlement Gldani that was built during 1970's and 1980's in Tbilisi in former Soviet Georgia. Questioning the expression of the society reflected on the physical environment during the transition period after the break up of the Soviet Union. This work intends to document the visible and invisible changes in the physical environment of the Gldani neighborhood, during the transition period from planned to market economy. The thesis discusses the processes of change affecting the Gldani residents and tries to understand the way they have adopted to their living space. The history of the neighborhood goes back to 1970's when the Georgian architect Teimuraz Bochorishvili finished planning the Gldani district. Along with other periphery settlements of the same kind, Gldani also served as a political decision from the soviet Government to encounter housing shortage in the former USSR and give each person a place to live. The majority of the inhabitants who settled in Gldani were workers, from different regions of Georgia who came to Tbilisi to work in factories. Looking to a present day Gldani, which exists in a new country and in a completely different system many radical changes can be observed. The society, which has already formed in the soviet times, found itself in a new reality in a new system and dealt with new challenges. The most significant events to be observed occur in the transformation period in which the state has less control and produce almost anarchical situations. The (Post) Soviet society that is still in constant change institutes itself through reshaping it's public and private spaces. New self- made constructions appear on the facades and in patios of soviet blocks. It has to be mentioned that in 1989 the soviet government of Georgia has permitted construction of vertical extensions or sometimes called, "vertical slums" on the multi-storey buildings consequences of which is also clearly visible on Gldani's blocks today. METHODS /Gldani and its residential blocks will be taken as a major case study for the research. The expression of societal change reflected on the built environment will be investigated in order to understand the relationships between lived and built space and their mutual influences. Methods include, the examination of the private space of the residents with the realization of detailed interviews with them and documenting the changes done in their living areas. On the other hand the visible changes will be documented, these include the external extensions on the residential blocks as well as separate objects like garages.



External Extension in Gldani

REFERENCES

- Delitz, Heike (2010). *Gebaute Gesellschaft. Architektur Als Medium Des Sozialen* (Frankfurt am Main: Campus Verlag)
- French, R.A., And Hamilton, *Socialist City: Spatial Structure And Urban Policy*
- Gachechiladze, Revaz (1995). *The New Georgia: Space, Society, Politics*. (London: UCL Press)
- Lefebvre, Henri (1991). *The Production of Space* (Oxford, UK: Wiley-Blackwell)
- Van Assche, Kristof, Salukvadze, Joseph, And Shavishvili, Nick (2010). *Tbilisi In Times Of Change. Socio-Cultural Dimensions Of Urban Space And Urban Planning* (Tbilisi: Tbilisi University Publisher)

Tinatin Gurgendidze (born in 1983)

Tinatin lives and works in Berlin. She has studied Architecture and Urban Design in Tbilisi and Barcelona. Currently she is working on her PhD thesis concerning the (post) soviet mass housing settlement Gldani that is located in Tinatin's hometown Tbilisi. Tinatin's work concentrates on the sociological approach towards architecture and urban space, in her work she tries to understand what has happened with the neighbourhood Gldani in the transition period after Georgia became an independent country from Soviet Union.

RETHINKING THE URBAN SPACE - CASE STUDY MOSTAR

Senada DEMIROVIĆ HABIBIJA

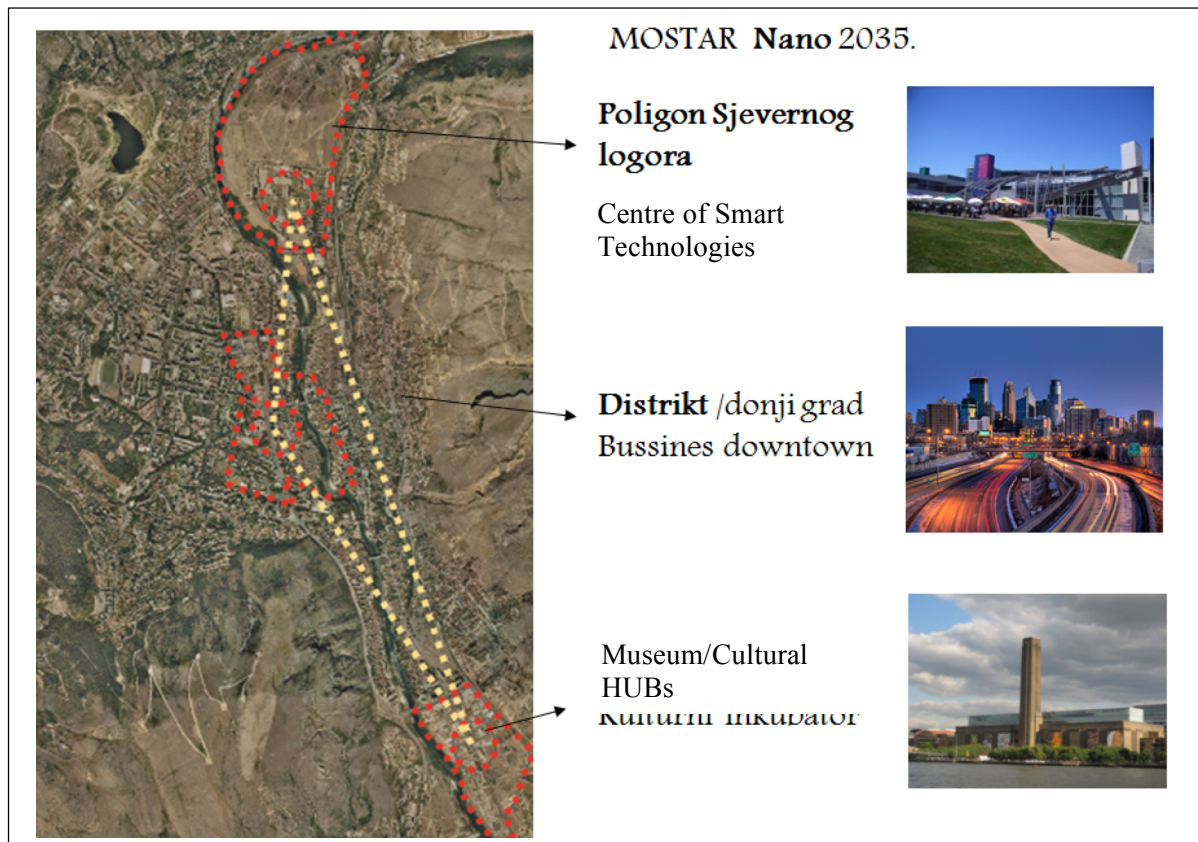
PhD candidate

Faculty of Architecture, University of Sarajevo, Bosnia and Herzegovina

www.cadamostar.com

senada975@gmail.com

If ambitious manifesto of modernism of the 20th century, that "form follows function" we paraphrase the way that "form follows fiction" what would we get? It would be completely new area and quality of the space and architecture that surrounds us. This paraphrased thought opens new doors as if "form" followed „fiction" about architecture of the cities we could think as about the universe of stories told by people who live there. Fiction opens a new dimension in which the city could be seen as a psychological process. Knowing the truth about how in one human life so little belongs to "us", shows the depth of the stability of the city that in one human lifetime cannot be exhausted. Only fiction can help the process of survival of the city and so the same city continues its life in a new light! Using multi-criteria analysis we numerically evaluate all the alternatives according to several criteria that are directly connected to previously designated setting. Analyses could be used to determine the most appropriate classification opportunities or simply to distinguish acceptable and unacceptable possibilities so that limited number of opportunities enters into the next stage for a detailed assessment. The aim of this paper is to propose a series of initiatives, studies and scenarios that will enable the city center of Mostar to function more smartly. It adopts the premise that physically smarter city will provide the canvas upon which business, social, cultural and educational conditions can flourish together with improved environmental sustainability which refers to the "new" light and the continuity of the city life.



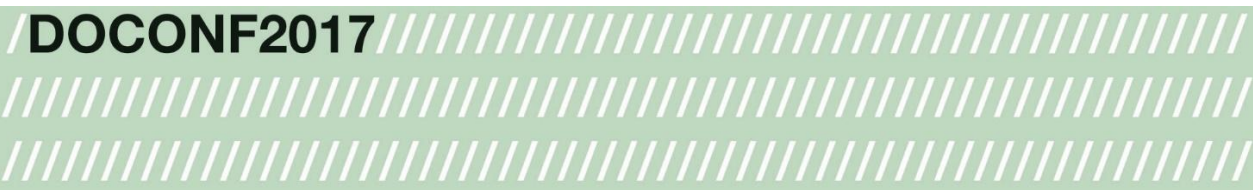
Mostar as Nano-technology centre in 2035 – A new vision of urban space reuse

REFERENCES

- Lynch, K. (1960). The Image of the City. (Harvard – MIT)
- Gehl, J. (2011). Life between the buildings – using public space. (Washington: Island Press)
- Norberg-Schultz; C. (1968). Intentions in Architecture. (Cambridge MA: MIT Press)

Senada Demirović Habibija (born in 1975)

She is a founder and curator of ADA, Centre for Architecture, Dialogue and Arts in Mostar. She studied in Morocco (Rabat), Sarajevo and Denmark (Horsens) and she holds MA and MSc from the Faculty of Architecture at the Sarajevo University. Senada is PhD candidate at the same University with the thesis „Urban reconstruction in continuity“. She has worked in the post war reconstruction and rehabilitation of the Mostar historic city core. From 2000 until 2004 she worked within Foundation of Aga Khan Trust for Culture (Office in Mostar) and City Institute for protection of cultural heritage. Currently she works as Senior Adviser within Spatial Planning Department of the City of Mostar.



URBAN FABRIC OF BRATISLAVA AFTER 2ND WORLD WAR

Peter HORÁK

PhD candidate

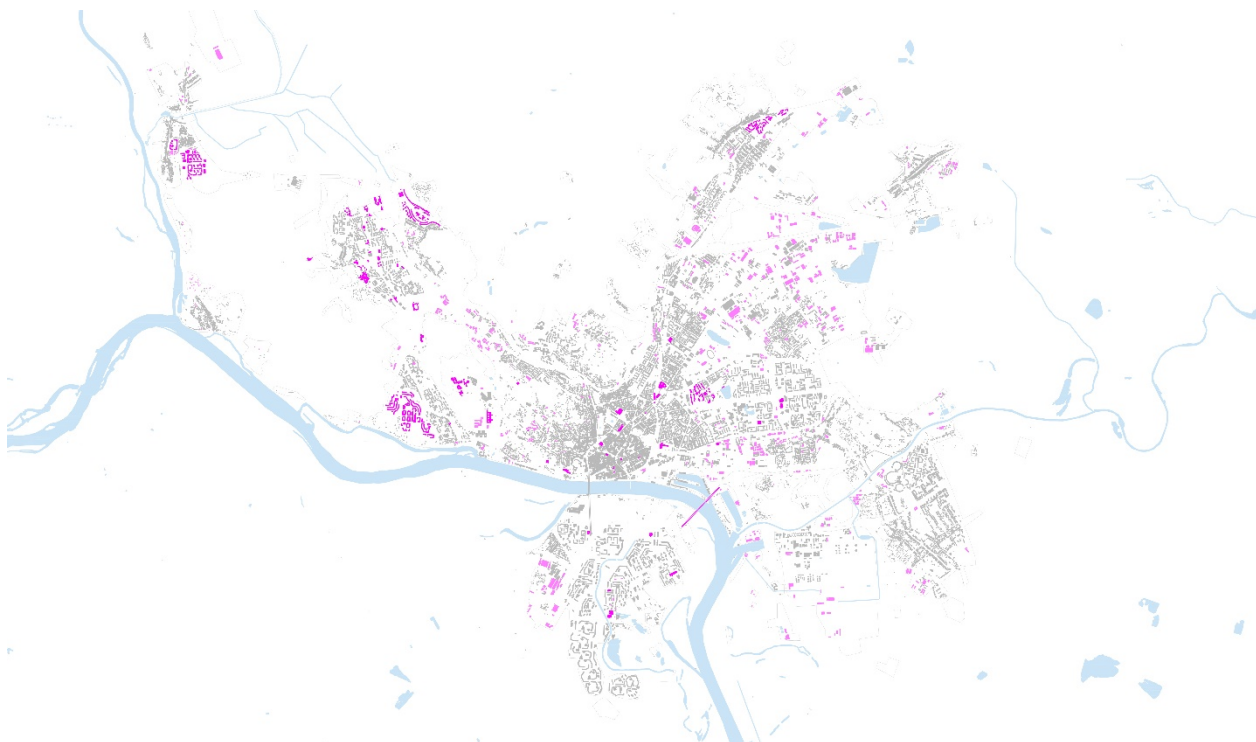
Department of Urban Design and Spatial Planning, Faculty of Architecture

Slovak University of Technology, Slovakia

www.fa.stuba.sk

arch.peter.horak@gmail.com

The urban fabric development of capital of Slovakia after world wars reflects two main political and economic systems. The first represents a centrally planned economy controlled by the state, in the time of socialism during years 1945 to 1989. The second is a free-market economy known as capitalism, which has come after 1989 and still continues. These two factors shaped the most of Bratislava townscape which can be seen today. In Slovakia, socialistic tendencies of building fast and effectively on extensive land areas with regulated planning culminated into aversion to this regime. This extreme, applied for decades, replaced another extreme, where the power held investors and the planning of the city became secondary. The first regime mainly represented its power by building a massive amount of the residential areas by repeating few types of buildings. This led to construction of more than 2000 ha of mass housing areas. An exception were unique buildings but still subordinated to socialistic typology. The second regime disrupted previous tendencies and the power moved from the state to hands of private investors. Because of unfavourable economic situation after 1989, the heritage of massive residential areas stayed as a part of city with intensions of rebuilding it. Negative aspects were slow reactions of city plan to actual situation, what deepen some problems of existing monofunctional areas. With higher prices of land and repressed planning principles, it also reflected into construction of high stories buildings, placed non-conceptually in existing urban fabric. The article monitors development of urban fabric and water areas through decades, catching every 10 years stage of development with main description to relations of current city planning, economic and political situation. At the end are defined main positive and negative aspects of city and its planning. Proposed are solutions, which can harmonize impacts of two extremes, represented by opposing socialism and capitalism from the perspective of city planning. Those are, for example, creation of subcenters, main city concept, more detailed planning documentations, 3D scheme of the city, ecological and economically favourable designs.



Urban fabric of Bratislava and its construction in time period 1980 - 1990.

REFERENCES

- Moravčíková, H. Topolčanská, M., Szalay, P., Dulla, M., Ščepánová, S., Toscherová, S., Haberlandová, K. (2011). *Bratislava Atlas sídlisk*. (Bratislava, SLOVART)
- Perrault, D., Dulla, M., Michálek, S. (2013). *Bratislava Metropolis*. (Bratislava: Spolok Architektov Slovenska)
- Andrášiová, K., Dulla, M., Haberlandová, K., Moravčíková, H., Pastoreková, L., Szalay, P. (2015). *Plánované neplánované mesto: Moderné urbanistické koncepcie v tradičnej mestskej štruktúre*. (Architektúra a urbanizmus)
- Kedro, D. (2001). Bratislava a jej územný plán (Bratislava and Spatial Planning), ARCH, ročník/volume 6, č 2 (Bratislava: Meritum)
- Kusý, M., (1975). *Architektúra na Slovensku 1945 – 1975* (Bratislava)

Peter Horák (born in 1988)

PhD student of Faculty of Architecture STU in Bratislava since 2014. In 2016 received scholarship in Vienna - Technische Universität, where under consultations of Ass. prof. T. Dillinger studied problemacy of Slovak and Austrian crossborder planning. Title of dissertation thesis is Urbanism in 20th Century in Slovakia, Case Study Bratislava, led by prof. Ing. arch Bohumil Kováč, PhD.

EPHEMERAL METAMORPHOSIS OF THE CITY: BULKY WASTE COLLECTION IN BUDAPEST

Gergely HORY

PhD student

Department of Urban Planning and Design, Faculty of Architecture

Budapest University of Technology and Economics, Hungary

www.urb.bme.hu / hory.gergely@urb.bme.hu

This paper presents an investigation into the ephemeral transformation of the everyday use of public space during the annual bulky waste collection on the streets of Budapest. Since 1972 the public domain maintenance company of the city has been offering its service of collecting unused pieces of furniture, electric devices and other waste unsuitable for regular disposal free of charge at a previously designated date. This is the time every year when streets are suddenly turned into dumpsites. The presence of discarded objects alter the perception of streets, however objects themselves are changed as well by placing them outside of apartments: objects that are usually associated with the interior and private ownership now occupy outdoor public space and their status of being owned practically ceases. The ritual of disposal and their new context of being in public domain detour objects from their original meaning. However, this is only the beginning of a series of transformations: heaps of waste suddenly turn to be treasure troves for people with various interests. Throughout the article three types of users will be differentiated: *tourists*, *hobbyists*, and *professionals*. Tourists are people, who walk on the streets covered with waste only due to curiosity and pleasure. They find fun in the unconventional situation. Hobbyists are scavengers, who try to find things for personal use. Professionals are organized groups, equipped with special tools and vans, who systematically look through garbage in search of things that can be sold. For them this activity is a work for a living. Members of this group contesting each other for territories that result in the informal privatisation of different parts of the streets. "Guards" start to occupy and appropriate sites. Heaps of waste is transformed from a collection of free hidden treasures to informal private areas, where professional scavengers have priority to collect valuable objects. Others can only get access to anything if they buy them from the "guards". Sites of waste area transformed to unintentional shops and the whole bulky waste collection process into an informal bazaar. The operation of these three user groups shapes the ephemeral event-based architecture of the streets covered with waste. Bulky waste collection in Budapest is a post-war urban heritage that seasonally suspends conventional usage patterns of the city and replaces them with a completely different one, whose rules remain unknown for local users. The article will investigate the relationship of this unintended usage with the existing physical environment. On-site data was collected during 2016 and 2017 for the research in various districts of Budapest that is intended to serve the exploration of the phenomena and helps the spatial analyses of the bulky waste collection's ecosystem.



Bulky waste collection in Telepy street, 1975. photo: Fortepan - Bán Tamás

REFERENCES

- Brandes, U., Stich, S., Wender, M. (2009). *Design by Use, The Everyday Metamorphosis of Things*. (Basel, Boston, Berlin: Birkhäuser)
- Hill, J. (2003). *Actions of Architecture, Architects and Creative Users*. (London: Routledge)
- Jencks, C., Silver, N. (2013). *Adhocism, The Case for Improvisation. Expanded and updated edition*. (Cambridge, Massachusetts and London, England: The MIT Press)

Gergely Hory (born in 1989)

Gergely Hory is a Phd student at the Department of Urban Planning and Design at the Budapest University of Technology. His research focuses on how human use can alter existing physical environments and produce architecture. In addition to academic work he also practices architectural design.

HIDDEN MODERNISM: ARCHITECTURE THEORY OF THE SOCIALIST REALIST GAP

Borbála JÁSZ

PhD candidate

Department of Philosophy and History of Science, Faculty of Economic and Social Sciences

Budapest University of Technology and Economics, Hungary

Institute of Philosophy, Research Centre for the Humanities, Hungarian Academy of Sciences

www.phil-inst.hu / www.filozofia.bme.hu

jasz.borbala@filozofia.bme.hu

Restructured power relations in countries of East-Central Europe after WW2 also left their mark on architecture. Historical forms returned to the language of architecture after classical modernism of the interwar period. The Soviet worldview was the dominant ideological system with a motto: “socialist by content, national by form”. A specific type of building of the era was resulted in the neoclassical façade, and modernist structure below the surface: party houses, university buildings and complete Potemkin cities were built this way. The era of Socialist Realism was held there in the 1950s only. After that a new age emerged: the era of house blocks. In 1954 the Khrushchevian architectural turn with their house block systems was a renewal of the classical modernist architecture theory, which was based on a scientific method of building. The experimental housing estates were built by involving science. This was the common ground of an international approach of the age. In my paper I will argue that the ideology of house factories is exactly the return to the classical, science based modernist tendencies of architecture theory in the interwar period. Historical forms returned to the language of architecture with the Marxian worldview, but the Khrushchevian architectural turn grounded a new way of architectural thinking within social responsibility in the 1960s. This was the age of house factories and house blocks, and it was based on scientific planning and the fight against individualism. There are lots of similarities between the city of the first machine age and the socialist house block system. The 'machinised city' is called Le Corbusier's Villa Radieuse, where the districts and methods of usage worked together. The ideal block house was a type of Unite d'Habitation, which opened the door for the style of new brutalism, a result of which was the functional and objective socialist house block made of concrete. Scientifically calculated rooms in a house were properly attributed to methods of usage by habitants who are the users. In my paper first I will focus on the façadism of Socialist Realism in the architecture of East-Central Europe. Second I will explain that architectural tendencies of classical modernism did not disappear in this period, they were just hidden in case of public buildings or migrated to the industrial planning. Third I will claim that after this Socialist Realist gap, architectural theory and planning tendencies of the interwar period – especially the work of Le Corbusier – returned and continued.



New architecture, new society. photo: Fortepan

REFERENCES

- Jasz, B. (2016). *The Developement of Pictograms: Scientific Visualisation of Otto Neurath's Picture Language and Its Actuality* (Budapest: Opus et Educatio)
- Jasz, B. (2017). *The Triumph of Function over Form: The Role of Analytic Philosophy in Planning and Analysing Modern Architecture* (Delft: Footprint 20, under review)
- Jasz, B. (2016). *A ház mint életszerszám: Le Corbusier hatásának elemzése Kozma Lajos építészet-elméletében* (Budapest: Századvég 21)
- https://vm.mtmt.hu//search/slist.php?nwi=1&initied=1&ty_on=1&url_on=1&cite_type=2&orderby=3D1a&location=mtmt&stn=1&AuthorID=10042838

Borbála Jász (born in 1986)

I got my master's degrees in Philosophy, Art history and Pedagogy. Now I am an assistant lecturer at Budapest University of Technology and Economics, Department of Philosophy and History of Science, where – as a PhD candidate – I work on my thesis as well: the monograph of the architecture and theory of Paul Ligeti, an international known Hungarian modernist architect. My research field is the connection between architecture and philosophy in the interwar period. I am also interested in topic of East-Central European Socialist Realist architecture. I take compulsory and free elected courses at BUTE, Department of Architecture and of Industrial Design, and free elected courses. I work as a research assistant at the Hungarian Academy of Sciences Institute of Philosophy.



MASS HERITAGE OF NEW BELGRADE: HOUSING LABORATORY AND SO MUCH MORE

Jelica JOVANOVIĆ

PhD student

Faculty of Architecture, Institute for Art History, Archaeology and Preservation

University of Technology Vienna, Austria

www.denkmalpflege1.e251.tuwien.ac.at/?page_id=6824&preview=true/

jelica.jovanovic011@gmail.com

Central zone of New Belgrade and other sites of the area have either been under tentative protection or are protected by the law of Republic of Serbia, and slowly is gaining this long awaited canonical status of *cultural property* (in Serbian: kulturno dobro). However, this good news has often been overshadowed by the desperation among the professionals, the fear among the flat owners and the fury among politicians: the first because they grasp the scale of the job-to-be-done, the last because it interferes with their hopes and wishes, and the second because they are stuck between the first and the third group. This whirlpool of interests shows many, on the first sight hidden properties of New Belgrade, that stretch far beyond the oversimplified *Triade* of values of this city within the city: the narratives of ‘the unbuilt capital of Yugoslavia’, ‘the largest dormitory of Belgrade’ and ‘the unrestrained modernist playground’. I would like to offer other points and value nodes to these that are the most frequently used, and to try and describe the complexity of the integrative efforts to the emergence of this new city, as well as the omitted and overlooked aspects to its reconstruction, deregulation and “failure”. The focal point of the paper will be the emergence, the use and the disappearance of the prefabricated housing. The history of New Belgrade can be delivered through history of peculiar Yugoslav housing prefabrication, the path less travelled. Through the timeline of the technological experimenting and advancements one could narrate decade by decade of the leap to the left side of the Sava River. The narration could be roughly divided into four major periods, based on the technological advancements. The period of the ‘rope and stick’ of the 1950’s coincided with the establishment of the institutional framework and major political, fiscal and administrative shifts and crisis. The period of expansive industrialization, enthusiastic integration and overwhelming experimentation in the 1960s is the most fruitful and most productive period, with the largest built stock. This is the period from which the dissolution of the ‘working system’ stems: the industrial pauperization of the 1970’s that led to the deregulation and corporatism in the 1980s, that we still live in today.



The view of New Belgrade from Brankova Street: in the focus is the Block 21 in construction (buildings S1-6 and B8 & B9) to the right Federal Executive Council, to the left Old Fairground. cca. 1965. source: collection of Miloš Jurišić

REFERENCES

- Jovanović, J. (2014-2016). *Анализа претходно заштићене целине Централна зона Новог Београда, Блокови 21- 26, 28-30. Урбанистичко - архитектонска анализа*. [Analysis of the Central zone of New Belgrade under tentative protection, Blocks 21-26, 28-30. Urban planning and architecture analysis]. (Belgrade Institute of Heritage Protection, unpublished)
 Technical documentation: Blok 21-26, 28-30. Historical Archives of Belgrade - Novi Beograd SO.
- Blagojević, L. (2007). *Нови Београд: оспорени модернизам* [New Belgrade: disputed modernism]. (Belgrade: Institute for textbooks and teaching aids, Faculty of Architecture University of Blegrade, Belgrade Institute of Heritage Protection)
- Mrduljaš, M., Kulić, V. (eds.), (2012). *Unfinished Modernisations Between Utopia and Pragmatism*. (Zagreb: Association of Croatian Architects)
- Vujnović, R. (1997). *Dinamika izgradnje grada – Jedna etapa u izgradnji i rekonstrukciji Beograda*. (Belgrade: Izgradnja magazine, Association of Engineers and Eechnicians of Serbia, Association of Architects of Serbia)

Jelica Jovanović (born in 1983)

From 2013 PhD student of University of Technology Vienna. Graduated at Faculty of Architecture University of Belgrade in 2010. Founder and member of NGO Group of Architects. Co-author of Summer School of Architecture in Bač. Coordinator of regional projects *Unfinished Modernisations* and *Inappropriate monuments*. Project coordinator of Docomomo Serbia. Trainee of Cultural Heritage without Borders, Central Institute of Conservation of Serbia, Belgrade Open School, Europa Media and IAESTE. Scholar of OeAD *One Month Visit*, SAIA Action AT-SK and National Scholarship Programme of Slovak Republic. Curatorial assistant of *Yugoslav Architecture 1945-1990* exhibition for MoMA. Member of Docomomo Serbia (2011), Association of Conservators of Serbia (2012), Association of Belgrade Architects (2012) and ICOMOS (2017).

BRNO REGIONAL CENTRE – NEW HEART OF THE 20TH CENTURY CITY

Lukáš KOS

PhD student

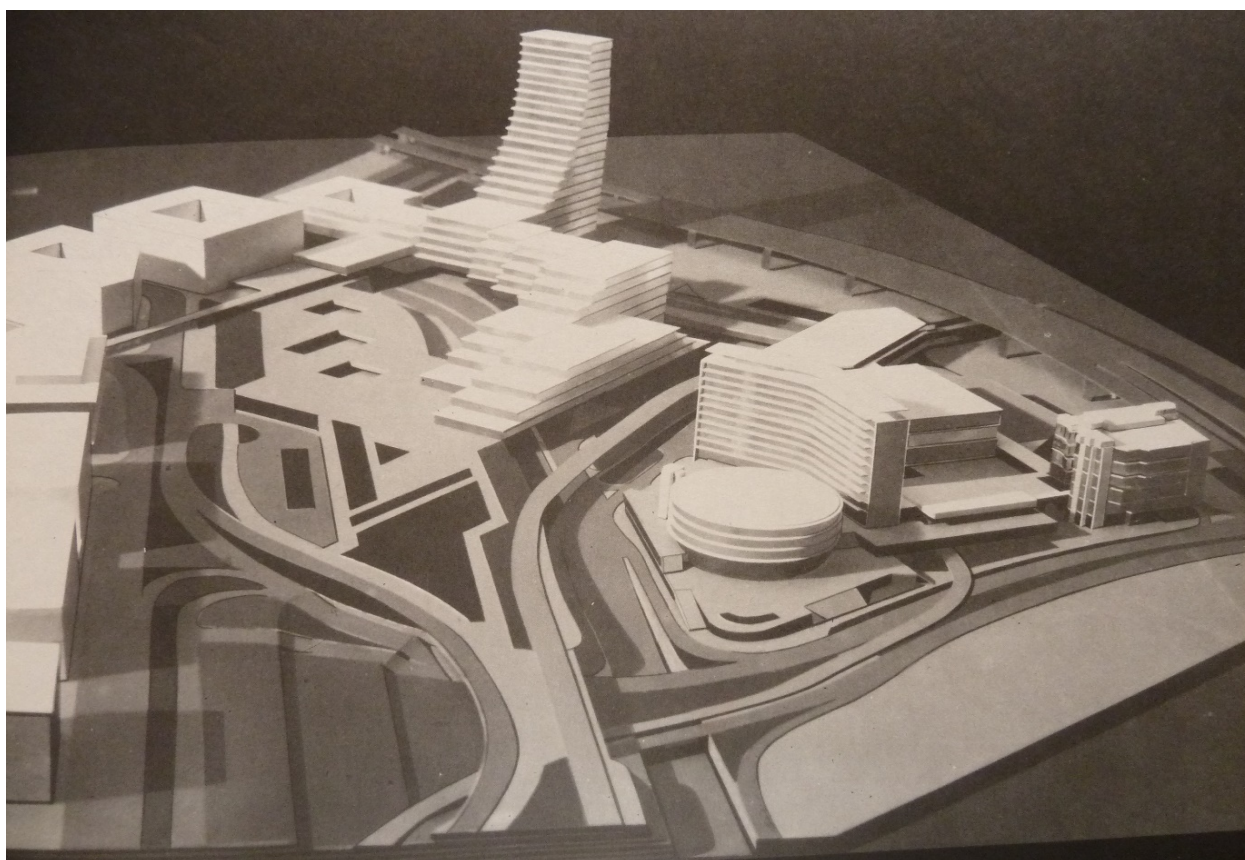
Department of Art History and Cultural Heritage , Faculty of Arts

University of Ostrava, Czech Republic

<http://ff.osu.eu/kdu/>

koslukas1@gmail.com

The absence of new urban facilities and an obsolete retail network in the centre of the city led to the thought of building a new shopping centre in Brno in the early 1960's. Several possible alternative versions of this project were created in the cooperation of the Department of the Chief Architect and the Brno State Project Institute for Commerce. The realization of the centre was supposed to meet the ever-growing consumer requirements in the area of commerce as well as to offer local inhabitants the possibility to spend their free time. The chief architects of the centre Zdeněk Řihák, Ivan Ruller, Jindřich Kumpošt jr. rose to the occasion in an exemplary way. In addition to their own invention invested in the project, they took inspiration from the architecture of department stores and shopping centres in Sweden which were to for instance to show the ways of how to take best advantage of the spatial layout of individual business units of the centre, so that inspiration from France and following the recommendations of Jaromír Sirotek, the authors also included housing units to bring even more life into the designed space. Brno regional centre was to become an almost perfect example of spatial architecture in our country, where all its operational functions – urban facilities, transport, housing, technical facilities and natural elements – would coexist as well as possible and fulfill their tasks. The theoretical aspects of “city centres”, their growth, and redevelopment were studied by the employees of the Research Institute for Building and Architecture in Brno, mainly by architect Karel Strejc, as attested to by his excellent theoretical work. This also became an important basis for the planning of Brno regional centre. Sadly, the centre was never built due to the adverse circumstances brought about by the Soviet occupation in 1968.



An Architectural Model of Brno Regional Centre (1968)

REFERENCES:

Lukáš, K (2016). Brněnské regionální centrum – “Nové srdce města dvacátého století”, in: Brno v minulosti a dnes, Brno 2016, s. 361–391, Archiv města Brna. / Kos Lukáš: Brno Regional Centre “The new heart of the city in 20th century”, in: Brno in the Past and Today, Brno 2016, page 361–391, Brno State Archives.

Šedesátá léta dvacátého století a památková ochrana moderní meziválečné architektury, in: Brno v minulosti a dnes, Brno 2015, s. 375–385, Archiv města Brna. / Sixties of the Twentieth Century and Historic Preservation of Functionalism Architecture, in: Brno in the Past and Today, Brno 2015, page 361–391, Brno State Archives.

Lukáš Kos (born 1983)

is a Czech architectural historian. He studied at Palacký University in Olomouc, in the field of The History of Art and the Theory of Art (2006–2014). Master thesis: Historic Preservation of Functionalism in Architecture: Failures and Successes. Currently, he studies at University of Ostrava, in the field of The Art History and Cultural Heritage. He works at Brno City Museum – Department of Architecture and Town Planning.

RECLAIMING THE SQUARE: THE RIGHT TO PUBLIC SPACE

Ivana MARAŠ

PhD candidate

Department of Architecture and Urbanism, Faculty of Technical Sciences

University of Novi Sad, Serbia

www.ftn.uns.ac.rs/n1386094394/faculty-of-technical-sciences

ivanamaras@uns.ac.rs / ivamarash@gmail.com

The city is a place of creation and acquisition of culture, an urban conglomerate with the most important economic and social role, where political life and different ideologies are formed and developed. The character of the city, and thus society, is largely determined by its public spaces that provide the quality and dynamics of everyday urban life. In Novi Sad, as in most other cities in Serbia, as a consequence of rapid post-war rebuilding and reconstruction of country as well as accelerated urbanization, one of the most important elements of urban morphology – public square is mainly ignored and neglected. This policy continued to this day and therefore squares in Novi Sad are usually deprived of identity, core values and characteristics, and for many years represent transit non-places separated from city life. In this way, Novi Sad inevitably loses its best features so typical for the city and urban lifestyle, which are firstly manifested in the public space where communication takes place. The aim of this paper will be directed towards the affirmation of (unused) opportunities and potentials of The Galleries Square in Novi Sad, with a desire to contribute to the articulation of a vision of what this urban space should and could possibly become. As well as a significant number of other open public spaces in Novi Sad, The Galleries Square has been transformed into the traffic area, and consequently important public buildings that are surrounding it, can't correlate with it. The Galleries Square, whose physical structure is formed by three museum objects, is only used as a parking space, and such neglect of its primary and most important function, had multiple negative impacts on the museums. Although The Galleries Square has been cancelled and disputed as the place where the urban way of life unfolds, its unique urban and program context opens up the possibility for its activation, which would result in the presence and active participation of citizens in the everyday life of the museums and vice versa. The urban environment can, in various ways, generate and encourage inventiveness and creativity, and by using different means and methods, public spaces of cities are transformed into polygons for artistic actions and interventions. The Galleries Square is identified as a public space of Novi Sad, which represents a potential, i.e. a logical place for artistic activities, and the re-appropriation of this city space would signify an important step towards the conquest of space in culture and society.



Gallery Square in Novi Sad, Serbia

REFERENCES

- Harvey, D. (2013). *Rebel Cities*. (Novi Sad: Mediterran publishing)
Lefebvre, H. (1991). *The Production of Space*. (Oxford: Blackwell Publishing)
Lefebvre, H. (2009). *Writings on Cities*. (Oxford: Blackwell Publishing)
Augé, M. (1995). *Non-Places*. (London: Verso)
Dragičević-Šešić, M., Šentevska, I. (2000). *Urban Spectacle* (Beograd: Clio YUSTAT)

Ivana Maraš (born in 1988)

Ivana Maraš is a teaching assistant at the Department of Architecture and Urbanism at the Faculty of Technical Sciences, University of Novi Sad, Serbia since 2012. She graduated from the University of Novi Sad, Faculty of Technical Sciences, Department of Architecture and Urbanism in 2011. She holds a Master and Bachelor Degree in the field of Architecture and Urbanism from the same Faculty. Currently, she attends PhD studies at the Faculty of Technical Sciences, University of Novi Sad.

CONNECTING CENTRE OF BELGRADE WITH DANUBE AND SAVA RIVERFRONTS: TO INCREASE ATTRACTIVENNES

Jelena Maric / Dr. Aleksandra Djukic

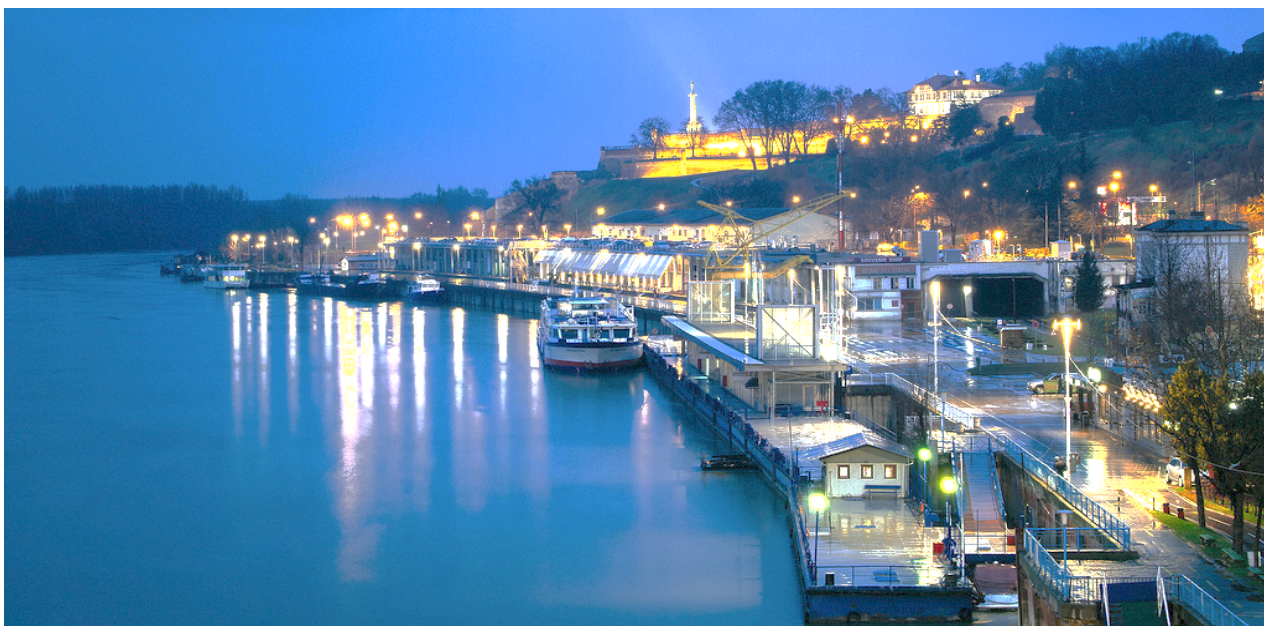
PhD student / Post doctor

Department of Urbanism, Faculty of Architecture, University of Belgrade, Serbia

www.arh.bg.ac.rs

jelena.maric1989@yahoo.com / adjukic@afrodita.rcub.bg.ac.rs / www.arh.bg.ac.rs

Although Belgrade is set on a confluence of the two rivers, its riverfronts have never been an integral part of the city, because of the barriers between historical urban core and the waterfronts. In the last decade, these areas have been in the focus because of its potentials for becoming one of the most attractive and important urban ambient, recognized by users and urban city planners. One of the main objectives of the Master plan of Belgrade 2021 is regeneration of neglected waterfronts. In this research methods for inclusion of Sava riverfronts into everyday urban life of its users was established, through analysis of quality and intensity of open public spaces and possibility for improving the network of pedestrians. The area called: Kosančićev venac has been chosen as a case study, because of its potential to be developed as an important connection between these two sites, and its values regarding culture, tradition and identity. Methods used for background research were mainly methods of observation and content analysis of existing literature, strategies, studies, Master plans and detailed regulation planning. In accordance with nature of this research and overall participatory approach, main research methods include direct surveying of selected stakeholders developed through interviews and questionnaires, as well as the method of mapping users on social maps (using different social networks). Two main groups of users were included in this research: residents of this area, and visitors (citizens and tourists). The aim of this paper was to identify main problems and potentials from the users perspective, and to measure the intensity of pedestrian movement and concentrations of users in open public spaces. Furthermore, the results were presented in a form of SWOT analysis showing main obstacles and physical and functional barriers, but also strengths and of open public spaces and pedestrian network. Finally, this paper could serve as a knowledge base for developing future strategies containing unique and specific guidelines for revival, activation and inclusion of riverfront area, by overcoming identified problems, and improving existing potentials in order for city waterfronts to live up to their full potential.



Belgrade: Historical city centre, Kosančićev venac and Sava riverfront

REFERENCES

- Bassett, K., Grif, R., Smith, I. (2002). Testing Governance: Partnerships, Planning and Convict in Waterfront Regeneration, Urban Studies, Taylor & Francis Group
- Boyer, MC (1995). The City of Collective Memory. (Massachusetts The MIT Press)
- Gehl, J. (2010). Cities for People. (Washington: Island Press)
- Gordon, E, de Souza, S. A (2011). Net locality: why location matters in a networked world. (New York: John Wiley & Sons)
- Lynch, K. (1974). Slika jednog grada, Gradjevinska knjiga. (Beograd)

Jelena Marić (born in 1989)

is PHD student and Teaching Assistant at Faculty of Architecture, University of Belgrade, Department of Urban Planning and Urban Design. Her field of interest and professional research is focused on urban design and planning, with the focus on open public space, healthcare spaces, and urban renewal. As a co-author she has numerous articles and chapters in international and national scientific journals and proceedings regarding aforementioned topics.

Professor: Dr. Aleksandra Đukić

is Associate Professor at Faculty of Architecture, University of Belgrade, Department of Urban Planning and Urban Design. Her field of professional activities and research is directed on urban design and planning, urban morphology and urban renewal. She has published 4 monographies, more than 150 articles and chapters in international and national scientific journals, books and proceedings focusing on the problems of identity of urban pattern, quality of public space, urban regeneration and climate change. She has received numerous awards in international architectural and urban competitions, awards in urban practice and two rewards for the best paper at International congress.

(POST-)IDEOLOGICAL MASS HOUSING LANDSCAPES: IN SEARCH FOR PRESERVATION APPROACHES

Nataliia MYSK

PhD student

Center for Urban History of East Central Europe

Department of Design and Basic of Architecture, Institute of Architecture

Lviv Polytechnic National University, Ukraine

<http://www.lvivcenter.org/en/> <http://www.lp.edu.ua/en>

nataliia.mysak@gmail.com

This paper will be an attempt to create a correlation between notions of heritage and modernist architecture in the contemporary Ukrainian context, and to inscribe them into the wider discourse. In aspiration to create equal housing conditions for everyone, governments of most of European countries treated modernist architecture as a tool. Even though in most of cases post-war residential developments didn't perform in the way they were intended, ideological background had a great impact on the way how they have been developing. Mass housing estates with similar morphologies transform according to different scenarios depending on contexts, they are in. In this respect the following question arises: could the notion of heritage also vary from case to case depending on context? Some of modernism ideologists treated modernist architecture as temporary, and such that should be substituted if outdated. Additionally, K. Snopek introduces the notion of 'intangible heritage' that is layered on the material structure of modernist district. Following these facts another question arises: what should be preserved? But in opposition to most of other European countries, where modernist mass housing faces some social problems or are stigmatized, such urban developments in Ukraine are socially integrated into the cities, and in many cases are actively developing. The discourse regarding the mass housing just started being constructed, and it deals mainly with some functional problems or has descriptive character. This paper will be an attempt to draft out some very general ideas about creating approaches to modernist developments, illustrated by the examples from biggest post-war housing development in the city of Lviv – Sykhiv district, construction of which started in the end of 1970^s. Modernist mass housing landscape is not heterogeneous in terms of ideology and functionality, therefore it is suggested to distinguish a few categories and scales of the built environment that might need specific approach to understanding and preservation: (1) Monumental art as a part of an architectural space, (2) Public buildings and structures, (3) Mass housing landscapes. Non-material values of modernist cityscapes are crucial: they could become a reason for preservation or an obstacle in this aspiration. Considering non-material values, it is possible to point out further two: an intellectual legacy as a set of the principles of the modernist architecture; cultural and social legacy. Nevertheless, the case with Sykhiv shows a possibility of the post-socialist landscape for active development, along with facing many “*post-*” complications.



Fragment of the monumetal painting on the sidewall of the residential building in Sykhiv district

REFERENCES

- De Lille, L. C., Guest, M. (2010). Towards Banalization? Trans-Forming the Legacies, in A. Kliems – M. Dmitrieva (ed.), *Post-Socialist City*, Jovis, 2010, 34-51
- Nikiforov, Y., Balashova, O., Gernam, L. (2017). *Decommunized: Ukrainian Soviet Mosaics*, Berlin, DOM Publishers
- Urban, F. (2011). *Tower and Slab: Histories of Global Mass Housing*, London, Routledge, 2011
- Черкес, Б., Мисак, Н. (2013). Розвиток і трансформація житлового району «Сихів» у Львові, Вісник Національного університету Львівська Політехніка, Видавництво Львівської політехніки, 757, (2013), 54-61
- Шліпченко, С. (2017). DECOM JOB: Кілька загальних міркувань щодо специфіки процесів декомунізації у просторах міста, Місто: історія, культура, суспільство 1 (2), (2017), 152-165

Nataliia Mysak (born in 1989)

architect, PhD student in architectural and urban planning theory, affiliated to Lviv Polytechnic National University, researcher at the Center for Urban History of East Central Europe, Lviv (since 2017). Conducted research at the Urban Studies department at Malmö University (2015-2016), and at the Institute for Urban Design and Landscape Architecture, TU Vienna (2013). Research interest: identity in architecture, post-war mass housing estates in Europe, visual representations. Took part in a few participatory planning projects of the public spaces in Lviv. Some of them – as a participant of the interdisciplinary initiative Group 109.

**POST - WAR SINGLE FAMILY SETTLEMENTS FROM WROCŁAW - ANALYSIS OF THEIR
URBAN PLANNING AND PRESENT STATE.**

Zuzanna NAPIERALSKA

PhD student

Faculty of Architecture, Wrocław University of Technology, Poland

<http://www.wa.pwr.wroc.pl/index.dhtml>

zuzanna.napieralska@pwr.edu.pl

In Wrocław, as well as in other Polish cities, post war buildings are a significant part of the existing urban space. Its modernization creates specific problems in the field of residential buildings, both multi-family and single-family. The subject of the studies covers examples of low and dense residential architecture from Wrocław in Poland, focusing on single family buildings, presenting interesting urban projects of clustered low - rise types of architecture from 60's - 80's 20th century period. At the beginning of the 60s in Poland single family architecture was meant to be the second force in housing governmental policy. This type of residential architecture has started to be more popular since 1957 when one of the first legislation regulations concerning individual building has occurred. It has regulated and helped to obtain credits from the government for house construction. In effect next decades has brought big developed and intensification of single family complexes in whole Poland, creating different varieties of dense and low urban spaces. The article will bring analyse and description of chosen, Wrocław settlements and also will present its current state. Author will show deformities of the original project and other consequences of uncontrolled extensions and modernizing. Numerous transformations of the volume of the houses has irreversibly changed the character of those settlements. House owners often fail to realize that the potential and the full value of their estates are in the whole urban complex, which shows the full attractiveness of the architecture and urban planning. The article will present five different post-war single family house settlements in Wrocław realised by collaboration with workplace housing association: - settlement 'Cuprum' Wojszyce at Skibowa street in Wrocław, realised by copper research and design center 'Cuprum' for its employees, - house colony 'Osiedle Młodych' (Youth's Settlement), located at Morelowskiego i Trentowskiego street at Oporów, designed by the commission of Youth Cooperative Association Assistance in Residential Construction, mainly gathering the employees of Wrocław University of Technology, - row house colony at Tapicerska street, realised by Building Cooperative of Single Family House Association 'Politechnika' at Wrocław, - atrial houses at Nabelaka street and the biggest complex of single family houses in Wrocław called 'Budowaleni' at Ołtaszyn district. Each of presented complex has its individual character and interesting urban plan.



Row house colony at Tapicerska street, Wrocław

REFERENCES

Adamczewska-Wejchert, H. (1985), *Kształtowanie zespołów mieszkaniowych*, (Warszawa: Arkady)

Przyłęcka, D. (2012), *Nie od razu Wrocław odbudowano. Plany zagospodarowania przestrzennego, koncepcje oraz projekty urbanistyczne i architektoniczne a ich realizacje w latach 1945-1989*. Wrocław: Oficyna Wydawnicza ATUT

Zwoliński A. (2009), *Determinations of Urban transformation of housing areas on the basis of spatial parameters of public spacer. The case of LIPS's (Large Panel System) housing in Szczecin. Summary of doctoral thesis – part 2: Introduction to the method*. *Przestrzeń i Forma*, 12/2009, p. 397-414, available at: http://www.pif.zut.edu.pl/pif-12_pdf/C-09%20Zwolinski.pdf [Accessed 15 Dec. 2015]

Zuzanna Napieralska (born in 1987)

Phd student at Wrocław University of Technology, Faculty of Architecture. Her research area covers post-war residential architecture from Wrocław. Specially period from 60's - 80's, 20th century. Her latest publications: 'City Landscape. Present state and problems with protection of post-war single family house complexes from uncontrolled modernizations', Cracow Landscape Monographs, Cracow 2016, Renaturalization of post-war housing estates in Poland. The value of residential green space', EAAE ARCC 10th International Conference (EAAE ARCC 2016), Lisbon 2016. 'Experimental single family architecture 60' and 70' 20th century in Poland', Commission of Architecture, Urban Planning and Landscape Studies, Lublin 2016.

CONFIGURATIONAL APPROACH TO REVITALISATION OF PUBLIC LIFE IN MASS HOUSING NEIGHBOURHOODS

Nevena NOVAKOVIC

Post doctor (2014)

Faculty of Architecture, Civil Engineering and Geodesy

University of Banja Luka, Bosnia and Herzegovina

www.unibl.org

nnovakovic@agfbl.org

Public housing neighbourhoods with a collective dwelling units were built in the second half of the twentieth century all over the world. The concept of the neighbourhood unit as a method of planning and design of the housing estates have produced in different environments different effects on quality of life, but related social problems as well. The paper will present the analytical tool for analysing the configurations of public open spaces within public housing neighbourhoods which is defined in the form of a universally applicable typology. This typology is based on spatial and sociological theories about relations between spatial form and social processes, mainly on application of space syntax theory. The main purpose of the typology is to measure the capacity of urban structure and architecture of the neighbourhoods to support the patterns of collective use of public open spaces. Also, the purpose is to overcome the analysis of public open spaces from the perspective of fixed morphological categories and enable their observation inside dynamic relation between local and global layouts as a crucial generator of neighbourhood liveability. Application of proposed typology is carried out on one representative modern neighbourhood with collective dwelling units in Banja Luka (Bosnia and Herzegovina). Typology examines the connection between public open spaces themselves and indoor and outdoor spaces as the main spatial criteria for supporting the co-presence and spontaneous surveillance. Configurational analysis of the neighbourhood is then compared to the results of field research about territorial practices of residents and it showed that assumed characteristics of urban form, such as distance between the street and building entrances, number of entrances related to the size of open area and building interface characteristics are relevant in the context of territorial complexity of neighbourhood. Proposed typology can be used as an additional analytic tool in process of urban regeneration of public housing neighbourhoods and intuitive urban design of public spaces, for testing the weak points of urban and architectural form in the context of sociability and social behaviour.



Configurational patterns of neighbourhood public spaces in “Borik” neighbourhood in Banja Luka (Bosnia and Herzegovina). Map by author.

REFERENCES

- Habraken, N. J. (2000). *The Structure of the Ordinary: Form and Control in the Built Environment* (Cambridge, Massachusetts, London: The MIT Press)
- Hillier, Bill (2007). *Space is the Machine. A Configurational Theory of Architecture* (London: Space Syntax, UCL)
- Stavrides, Stavros (2016). *Common Space. The City as Commons* (London: Zed Books)

Nevena Novaković (born in 1978)

is an architect with experience in fields of urban planning and urban design. She works as an Assistant Professor at the University of Banja Luka, Faculty of Architecture, Civil Engineering and Geodesy, where she teaches courses in the field of urban design. Nevena graduated at the same Faculty in 2003 and gained her doctorate at the University of Belgrade, Faculty of Architecture, Serbia, in 2014. She was a visiting scholar at the University of Michigan, A. Taubman College of Architecture and Urban Planning in 2008. During 2015 she was appointed as a Vice-Dean for Scientific Research at the FACEG. Her research and scholarship focuses on the urban theory and history of the 20th century, and contemporary issues of urbanism, with emphasis on analytical urban design, social issues of the urban environment and public housing neighbourhoods.

(RE)DEFINING PLACES FOR COMMUNITY IN SYKHIV HOUSING ESTATE

Natalia OTRISHCHENKO

Post doctor (2015)

The Center for Urban History of East Central Europe

Ivan Franko National University of Lviv, Ukraine

<http://www.lvivcenter.org/en/> n.otrishchenko@lvivcenter.org.ua

Activities performed within open spaces in socialist cities were regulated, organized or tolerated by authorities. After 1989/1991 those areas started to be redefined. Places for common usage without any specific content started to be filled with variety of elements and meanings. This process became extremely vibrant within uniform urban environment, which was centrally designed. During the transformational period of 1990s, severe economic conditions, and establishment of new system of relations between actors of spatial development, there were no resources for carrying about common places (or – in contrast – they became privatized) in post-soviet cities, so public spaces in large-scale mass housing estates became mostly neglected. They started to be perceived as the ones belonging to nobody, so either transformed into mono-functional zones (like gardens in the front of multi-storey apartment buildings or fenced areas around small trade units) or suffer from general irresponsibility and abandonment. Some of former open spaces are now used as religious sites or shopping malls. As a result, social life of mass housing estates is mainly located between consumption, entertainment, religion, and “invisible” transit zones. Public spaces could be described as places of social behaviour, encounters, and cultural exchange with four key qualities: (1) accessibility, (2) possibility to be engaged in activities around, (3) comfort as well as a good public image, and (4) sociability, therefore the ability of people to meet each other and interact there (Project for Public Spaces, 2009). The difference between socialist and post-socialist places for common usage might be explained with other types of social bonds behind them, variation in their sustainability, and number of possibilities to use the place for your own purposes. As a primarily case for studying the process of transformation of places for community I use Sykhiv, the biggest residential area in Lviv. It was centrally designed in the late 1970s using the concept of micro-district, prefabricated panel blocks, and standard decisions about public spaces. After 1989-1991 such planned districts entered the process of still-lasting reinterpretation according to new social conditions, expectations and visions of the future. What spaces of Sykhiv are perceived by people as public ones: envisioned from the very beginning at the level of planning, constructed after 1991, or constantly reinvented and recreated? How do people define the qualities of such spaces? What activities support their existence? To answer these questions, I will use different sociological data: in-depth interviews with inhabitants, results of surveys, unobtrusive observation, and visual materials. With my research I would like to delineate the process of reassembling of both material environment and social life in large-scale mass housing areas.



Central square of Sykhiv housing estate with “Intercity” trade center and Nativity of Blessed Virgin Mary Church on the background (Photo by author, 2015).

REFERENCES

- Cupers, Kenny (2016). “Mapping and Making Community in the Postwar European City,” *Journal of Urban History* 42(6), 1009-1028.
- Darieva, Tsypulma; Wolfgang Kaschuba & Melanie Krebs (eds.) (2011). *Urban Spaces after Socialism: Ethnographies of Public Places in Eurasian Cities* (Frankfurt/Main: Campus).
- Kleims, Alfrun & Marina Dmitireva (eds.) (2010). *The Post-Socialist City. Continuity and Change in Urban Space and Imagery* (Berlin: Jovis).
- Project for Public Spaces (2009). “What Makes a Successful Place?” Retrieved from <http://www.pps.org/reference/grplacefeat/> (as for February 20, 2017).
- Sammartino, Annamarie (2016). “Mass Housing, Late Modernism, and the Forging of Community in New York City and East Berlin, 1965-1989,” *American Historical Review* 121(2), 492-521.

Natalia Otrishchenko (born in 1989)

holds PhD (“Methodology and Methods of Sociological Research”) and leads the “Urban Stories” project at the Center for Urban History. She was tutoring during “Novyi Lviv” (2015), “Idea of the City: Reality Check” (2016) Summer Schools and coordinating educational program “Sykhiv: Spaces, Memories, Practices” (2017). She graduated from the UGRAD program (2009-2010), Ivan Franko National University of Lviv (2012), PhD program at the Institute of Sociology at the National Academy of Sciences of Ukraine (2015). Her scientific interests include urban sociology with focus on planned urbanity in socialism and beyond, qualitative methodology, oral history, and mental mapping of the space.

**DISCUSSING URBAN RECONSTRUCTION IN EARLY POST-WAR CROATIA:
SOME MODERNIST PERSPECTIVES ON HISTORIC ENVIRONMENTS**

Iva RAIČ STOJANOVIĆ

PhD student

Institute of Art History, Department of Art History

Faculty of Humanities and Social Sciences, University of Zagreb, Croatia

www.ipu.hr

iraic@ipu.hr

The Second World War brought extensive damage to urban areas across Croatia. In the immediate post-war period the country underwent a rapid reconstruction process, fuelled by the Yugoslav government's desire to build a strong socialist society. Architects and planners were presented with both utilitarian and ideological imperatives: to meet the practical needs of housing and industry and, at the same time, create environments which would reflect the new political values. Unencumbered by the direct Soviet influence and Socialist Realism after Tito's break with Stalin in 1948, the architecture community joined in the international Modern Movement and fully embraced the principles outlined in the 1943 Charter of Athens. This common narrative of post-war reconstruction in Croatia, although not exactly misleading, offers a somewhat simplified picture of contemporary discussions. Early 1950s urban plans for historic towns and cities, such as those for the centres of Zadar and Šibenik, show considerable concern with the particularities of the existing urban environments. Important starting points were the early 20th-century Central-European conservation tradition and the pre-1945 discussion on new architecture in historic Mediterranean settings. The post-war conservation professionals, empowered by the first comprehensive legislative framework, started to exert significant influence on the course of the reconstruction debate. They seized the opportunity to emphasize that built heritage was as important in the construction of the country's socialist identity as what was being built anew. The intention of the present paper is to expound on the interplay between the Modern and Conservation Movements, their impact on the early post-war urban reconstruction in socialist Croatia, and their subsequent reception. Selected excerpts from the post-war Croatian architectural and planning discourse will illustrate a range of proposed approaches to rebuilding historic cities, which were – to a greater or lesser extent – informed by the efforts of urban conservation. Suggesting a more nuanced understanding of the historical debate, the paper aims to explore ideas that have led to the present-day appreciation of both historic and modernist environments.



Harold Bilinić's proposal for the centre of Šibenik, 1956, a perspective view (courtesy of the Croatian Museum of Architecture)

REFERENCES

- Glendinning, M. (2013). *The Conservation Movement. A History of Architectural Preservation, Antiquity to Modernity*. (London & New York: Routledge)
- Kolešnik, L. ed. (2012). *Socialism and Modernity. Art, Culture, Politics, 1950–1974*. (Zagreb: Institut a povijest umjetnosti, Muzej suvremene umjetnosti)
- Mlikota, A. (2013). "Obnova i izgradnja povijesne jezgre Zadra nakon razaranja u Drugom svjetskom ratu" [Rebuilding and Construction of the Historic Core of Zadar after the Second World War Destruction], PhD diss. (Zagreb: University of Zagreb)
- Pendlebury, J., Erten, E., Larkham, P. J., eds. (2015). *Alternative Visions of Post-War Reconstruction. Creating the Modern Townscape* (London & New York: Routledge)
- Šverko, A. (2016). *A City is (Not) a House. A Dialogue Between the New and the Old Split, Urban Design Prelude*. (Zagreb: Upi2M Books)

Iva Raič Stojanović

is a research assistant at the Institute of Art History in Zagreb and a PhD student at the University of Zagreb. She received an MA in Art History and English from the University of Zagreb (2011) and an MSc in Conservation of Monuments and Sites from the Raymond Lemaire International Centre for Conservation, University of Leuven, Belgium (2014). She is involved in a research project on Dalmatia as a destination of the European Grand Tour in the 18th and the 19th centuries, run by the Institute of Art History and supported by the Croatian Science Foundation. Her doctoral research focuses on the Dalmatian town of Šibenik and the transformation its historic centre underwent from the early 20th century to the 1960s. She is particularly interested in the interrelationship between conservation and architecture communities, and their roles in the shaping of urban space.

RECONNECTION POSSIBILITIES OF SOCIALIST NEIGHBOURHOODS TO THE ADJACENT DANUBE RIVER IN NOVI SAD

Stefan ŠKORIĆ, Aleksandra MILINKOVIĆ, Dijana BRKLJAČ

PhD students

Department of Architecture and Urban Planning, Faculty of Technical Sciences,
University of Novi Sad, Serbia

www.ftn.ac.rs

stefan.skoric@uns.ac.rs / a.milinkovic@uns.ac.rs / dijana.brkljac@uns.ac.rs

Novi Sad (Serbia) had an intensive mass housing construction in the period after the Second World War on a vest land near the Danube River. Even though the main characteristic of analysed urban area is the adjacent Danube riverbank, newly built structures designed in the line with the principles of Modern movement have lost the connection with the river due to the urban morphology of the area. Although the city was faced with serious changes in the post-socialist period, this area remained unchanged, still giving some moderate examples of efforts to bring the city to the river. This research explores the possibilities of functional and morphological changes in those neighbourhoods, with an aim to bring mass housing estates and their inhabitants closer to the Danube River. The research will be oriented towards the valorisation of specific urban qualities of Liman III and Liman IV within this large area, in order to reconsider how a post-socialist legacy at city's waterfront can be used in the formation of new identity of the city through thoughtful reuse of urban space. The aim of the study is take advantage of observed potentials which make this part of the city suitable for the social life of its inhabitants and other citizens of Novi Sad, and to give the proposals and recommendations for its future development. New conceptualization of this urban structure along the Danube River might bring Novi Sad to the map of important tourist attractions along the river, especially having in mind its stance as the European Capital of Culture for 2021.



Distinctive socialist housing complex of Liman neighbourhood in Novi Sad (source: Stefan Škorić)

REFERENCES

- Kostof, Spiro (1991). *The City Shaped: Urban Patterns and Meanings through History* (London: Thames & Hudson Ltd).
- Lynch, Kevin (1960). *The Image of the City* (Cambridge: The MIT Press).
- Montgomery, John (2003). Cultural Quarters as Mechanisms for Urban Regeneration, *Planning, practice & research*, vol. 18, 2003, 293–306.
- Palmer, Robert (2004). *Report on European Cities and Capitals of Culture - Part I* (Brussels: Palmer/Rae Associates).

Stefan Škorić (born in 1988)

is a teaching assistant at the Department of Architecture and Urban Planning, Faculty of Technical Sciences, University of Novi Sad, Novi Sad, Serbia. He is a participant of numerous exhibitions and workshops, author and co-author of several papers presented at national and international scientific conferences, and a PhD student at the Department of Architecture and Urban Planning, Faculty of Technical Sciences in Novi Sad.

Aleksandra Milinković (born in 1982)

is a teaching assistant at the Department of Architecture and Urban Planning, Faculty of Technical Sciences, University of Novi Sad, Novi Sad, Serbia. She is a licenced designer since 2011, and a member of the Serbian Chamber of Engineers. She is author or co-author of several papers published in scientific journals and presented at international and national scientific and technical meetings.

Dijana Brkljač (born in 1986)

is a teaching assistant at the Department of Architecture and Urban Planning, Faculty of Technical Sciences, University of Novi Sad, Novi Sad, Serbia, where she is also a PhD candidate. She is author or co-author of several papers published in scientific journals and presented at international and national scientific meetings, and had a several artworks exhibited at national and international exhibitions.

INDUSTRIAL GEOGRAPHY IN THE FUNCTION OF INDUSTRIAL LANDSCAPE TRANSFORMATION

Ana ŠPIRIĆ

PhD candidate

Department of Architecture, Faculty of architecture, University of Belgrade, Serbia

a.spiric@yahoo.com

As an effect of deindustrialization, large areas of construction land, and many industrial facilities in urban areas, are currently underused or have been altogether abandoned. On the other hand, due to urbanization and expansion of cities, most of these areas are now located on the periphery of urban areas or in the cities themselves, which resulted in creation of dilapidated complexes unfit for proper conduct of manufacturing activities. Such decrepit and underused areas, professionally referred to as brownfield sites, often take up attractive urban land and are characterized by a high level of contamination, which contributes to the generation of many economic, environmental and sociological problems. In cities of Bosnia and Herzegovina, as well as in cities throughout Central-Eastern Europe, industrial heritage sites originate mostly from the era after World War II. Even these sites represent material evidence of industrialization and urbanization in the period of existence of the SFRY, the values of 20th century industrial heritage have not been recognized as important part of cultural heritage and potentials of development have not been researched. The processes of transformation and regeneration are aimed exclusively at achieving economic and environmental goals. Very important issues referring to transformation of post-war industrial landscapes in theory and practice of urban planning are potentials and factors of transformation and strategies of transformation defined at different administrative levels. This research focuses on the main characteristics emerging from historical and geographical aspect of locations of industrial activities that can be used as factors that affect the opportunities for industrial site reuse and transformation. In order to understand the main characteristics of industrial site it is important to analyze the locational factors at the global, regional national and local level. Also, it is important to research the mutual spatial and functional relationships of various industrial activities and conditions which led to the industrial deployment, the impact of industry on the environment and other urban functions, as well as the impact on urban form and development of cities and regions. The general overview of the present status of abandoned and underused industrial sites in Bosnia and Herzegovina and short analyses of their evolution is presented. The aim of this paper is not just to provide industrial geography as a theoretical and practical framework for industrial heritage research, but to emphasize the necessity of identifying and evaluating more post-war industrial buildings and sites. Exploring the locational and spatial potential of abandoned industrial sites contributes to the defining sustainable strategies of regeneration and facilitates the integration of these sites into the urban area.



Industrial site in urban landscape of Banjaluka (source: <https://www.shutterstock.com>)

REFERENCES

- Đukić, A. i Vujičić, T. (2014). Browninfo, Priručnik za uspostavljanje interaktivne baze podataka braunfild lokacija (Banja Luka: Univerzitet u Banjoj Luci, Arhitektonsko-građevinsko-geodetski fakultet, Deutsche Gesellschaft fuer Internationale Zusammenarbeit (GIZ) GmbH i INOVA informatički inženjering, d.o.o.)
- Pacione, M. (2005). Progress in Industrial Geography (London and New York: Routledge)
- Scott, A.J. (1982). Locational patterns and dynamics of industrial activity in the modern metropolis. *Urban Studies*, 19, 111–42.

Ana Špirić (born in 1983)

She is architect, researcher, and Ph.D. candidate at the Faculty of Architecture University of Belgrade. She holds a master's degree (2008) in architecture from University of Banjaluka, Republica Srpska. Her research interests focus on brownfield locations, industrial heritage, urban and place identity and sustainable urban regeneration. Her general research interests include historical, spatial, functional and cultural aspects of industrial brownfields and the preservation of industrial heritage values through adaptive-reuse. She has also done research related to the housing quality in cities, housing culture and cultural policies. Some of her articles have been published in national and international proceedings and journals focusing on urban identity and urban regeneration, and presented at international conferences.

CHANCES FOR “CREATIVE CITY” TURN – PLANNING BELGRADE

Vesna TOMIĆ

PhD candidate

PE Ski Resorts of Serbia, Serbia

vesna.tomic@skijalistasrbije.rs

It's been almost fifty years since international architectural competition for Opera house Belgrade, which first prize project, work of Danish architects Dall & Lindhardtson, was characterised by the jury as project transcending its era, project for the future. The new opera was not build, but was another capital building, named “Sava centar”, which became one of the largest congress, cultural and business centre in Europe. Both where project of culture, iconic objects, Sava centar as object of mass culture and Opera house as project of culture for elite. Those where years when in Europe position of culture in city development was changing, when culture and creativity become important as resource, from “arts-led” regeneration concept to being a part of entrepreneurial activities in cities. In this paper will be explored and discussed chances and opportunities of Belgrade, the capital city of Serbia, to develop cultural strategies, as tool of urban development and regeneration. Cultural, creative city become in last 20 years popular strategies of urban development, they are seen as the possibility for high competitiveness and implementation of the principles of sustainable development. Concept of using culture and creativity for urbo-economic development can not be successful without community involvement, development of social networks, human resource, identity and authenticity. Belgrade is specific by it's two major area. New Belgrade, was built as new center of than socialist Yugoslavia, during 1960'ths and 1970'ths, on the left Sava's bank, according the principles of the Athens Charter. On the right bank of the river lie the old part of town, with traditional city matrix, planned in 19'th century. They have different urban tissue and urban landscape, but both have identity and developing potential with implementing cultural strategies. The first part of the text deals with the concept of cultural and creative cities, with an overview of the objectives, means and methodologies in those strategies. The second part is dedicated to analyse spatial and urban plans and planning ideas for Belgrade, in the context of cultural and creative strategies. The paper ends with the “hot spots” in the planning system, lack in strategies and offers recommendations for further development within the Serbia context.



CHANCES FOR "CREATIVE CITY" TURN – PLANNING BELGRADE



REFERENCES

- Mommaas H. (2004). *Cultural clusters and the Post- industrial City: Towards the Remapping of Urban Cultural Policy* (Urban Studies. 41 (3))
- Landry, C. (2000) *The Creative City* (London: Comedia)
- Richards G., Wilson J. (2007). *Tourism, Creativity and Development* (Routledge, London)
- Djukic, A, Vukmirovic, M., Vanista-Lazarevic, E. (2016). "Creative Cities: Exclusive or Inclusive places Case study Belgrade", chapter in international monograph "Inclusive/Exclusive Cities." Editors: Ognjen Marina, Alessandro Armando (City of Skopje, Skopje)
- Stojanovic M., Petkovic N., Mitkovic P. (2012). *Culture and Creativity as Driving Forces for Urban Regeneration in Serbia* (International Journal of Social, Behavioral, Educational, Economic, Business and Industrial Engineering Vol:6, No:7)

Vesna Tomić (born in 1964)

in Novi Sad, Serbia, graduated at the University of Belgrade, Faculty of Architecture, where she is Phd candidate. She completed the course "Urban Economic Development" in Israel as a scholar of MASHAV. Ms Tomić was working in the Institute for architecture and urban planning of Serbia, Urban Planning institute of Belgrade, and now in PE Ski Resorts of Serbia. As a leading planner or as a team member has been engaged in work- out of town planning designs, projects and studies. She was awarded several times for professional accomplishments on national exhibitions and has published chapter in international book, article in scientific journal. Research interests - cultural and physical aspects of urban environment and the role of urban planning.

THE NATURE OF THE TOWERS. THE EVER-CHANGING CITYSCAPE IN POST-WAR HUNGARY

Gábor TÓTH

DLA Student

Department of Residential Building Design, Faculty of Architecture

Budapest University of Technology and Economics, Hungary

www.lako.bme.hu / toth@studiosupernatural.hu

After the second world war the social, political and economic circumstances had realigned the Hungarian population, generating a new form of urbanization. The phenomenon of the *high-rise buildings* seems to be suitable for studying and understanding these matters, as a representative of these changes. Every era has built their own *verticals*, the communist era of Hungary was no exception. As a result, these structures made their impact mostly in urban scale, independently of the fact of being a part of an ensemble or being a solitary of its own. the research examines the cases of nearly all the important high-rise buildings of that era in Hungary. Between the world wars Budapest chose the metropolis role models of the new-growing cities of America, beside Vienna and Paris as well. From the dawn of the world war - 1939 - the competition of the new Budapest town hall is a great example to examine this matter. Nevertheless, this was a common tower-builder challenge for the dominant architects of the postwar era, as well. In the few democratic years before the 1949 communist takeover, the postwar Modernist movement had recalled their principles and examples in order to prove them on the redevelopment of the war-destroyed Budapest. They goal was to provide healthy, aesthetic and technologically advanced residence for the citizens, a place for their new life. As the tower was a proper tool for the modernists for their intention, the soviet propaganda of the early 50's used them to turn the historically evolved cities into socialist ones, by creating a new urban silhouette, a new frame for the new life, making Moscow the main example. Behind planning axes, avenues, building ensembles and high-rising emphases the real ambition were to reorganize the urban fabric into a structure where hierarchy is unquestionable. The first results were finalized only in the middle of the 60's. Although the idea of socialist realism had already failed by this time, and the shaping of the towers were modernist again, the main urbanistic trends behind the tower buildings was the same as in the fifties. Ideologically, the main goal remained the same: to demonstrate the advancement of the regime by introducing high emphases in the existing urban structure and to change urban silhouette in order to constantly remind people of authority. Hence as a humanizing attempt, the compensation of the vertical scale introduced the principle of the empty space -the American plaza-, and the horizontal plane, as a common solution in Europe and in Hungary, as we can see. As a result, these buildings made their impact mostly in urban scale, so the future role of these high-rise buildings has to be discussed in urban context.



Manhattan's architects perform "The Skyline of New York"

REFERENCES

- Bonta, J.(1954). *A szovjet toronyházak és a szocialista építészet együttesek.* (Budapest: Mérnöki Továbbképző Intézet.)
- Koolhaas, R. (1994). *Delirious New York* (The Monacelli Press)
- Preisich, G. (ed.)(1963). *Budapest városrendezési problémái* (Budapest: Felsőoktatási Jegyzetellátó Vállalat)
- von Moos, S. (2016). *The Monumentality of the Matchbox: On "Slabs" and Politics in the Cold War* in Moravánszky, Ákos — Kegler, Karl R. (ed.): *East West Central. Rebuilding Europe, 1950-1990. Vol 1. Re-Humanizing Architecture. New Forms of Community 1950-1970.* (Birkhauser)

Gábor Tóth (born in 1986)

Graduated in 2013 at Budapest University of Technology and Economics, Faculty of Architecture, Department of Residential Building Design, since 2013: freelancer architect He is a tutor at the Department of Residential Building Design in Basics of Architecture, Space Composition, Residential Building Design, Faculty-Led Planning. His doctoral research topic is 'Architecture as an Image'. He participated in the research project 'Renewal of Tenements in the Historical City Centre' commissioned by the Municipality of Budapest. Beside practicing as an architect, he regularly takes part in architectural design competitions and cooperates in architectural exhibitions.

HOW (NOT) TO DESIGN A LANDSCAPE? (EX-POST YOUTUBE LIKE MANUAL)

Ján URBAN / Andrea LACKOVÁ

PhD students

Institute of Urban Design and Planning, Faculty of Architecture, Slovak University of Technology
in Bratislava

www.fa.stuba.sk

jan.zeal@gmail.com / andy.lackova@gmail.com

Gabčíkovo Waterworks - the discourse, discussion and role of spatial planners, landscape designers and architects. Its influence on the surrounding landscape and urban fabric. We focus on the controversial project of Gabčíkovo-Nagymaros Waterworks and its realized part. The period before, during and after construction. We all know the processes and story of "Gabčíkovo" from outside, but what was happening inside the planning process, specifically from the viewpoint of planners and architects of the dam? Our research is aimed at the role of the architects, urban planners and landscape designers, their discussions, ideas, discourse about city, landscape and spatial planning. Last but not least we are also interested in the impact the construction of the dam had on the city of Gabčíkovo and other settlements in the surrounding region. How did the sudden growth of citizens (workers) change the image of the city? And how did the city adjust when they left after finishing the construction? Methods, procedure, approach. We analysed historical planning documentation, project reports by the authors, interviewed the relevant planners and looked at the official and personal correspondence. We used the method described in Eco's novel *Numero Zero* which we named past anticipation. Results, findings, products. The result of our research is a visual stop-motion video and ex-post design manual. Lessons learned from the process of planning an extensive landscape and urban fabric changing project could be valuable for the next generation of decision makers and planners.



REFERENCES

- Danišovič, P. (1996). *Aj tak(to) sme stavali sústavu vodných diel Gabčíkovo – Nagymaros*. Collection Of memories (Bratislava, AFA)
- Hruška, E. (1946). *Krajina a její soudobá urbanisace* (Praha, B. Pyšvejc)
- Belčáková, I. (2010). *Krajina – Predmet vzdelávania a výskumu* (Bratislava, Perfekt)
- Ziel, M.; Osswald, S.; Hasemann, O.; Schnier, D. (2012). *Second Hand Spaces* (Berlin, Jovis)

Ján Urban (born in 1986)

After 6 semesters of studying psychology (Comenius University) he switched to architecture. He graduated 2016 after studying at FA STU and TU Munich. Currently started his PhD. studies on the Institute of Urban Design and Planning at FA STU. His focus is on improving the quality of life in settlements along the Danube river via design. He is active in NGOs (CEF – dunajsky fond, gook), has experience with work in several studios and is also involved in a process of revitalizing public space in the town of Hlohovec.

Andrea Lacková (born in 1990)

Graduated from FA STU in 2016 from Urban Design programme and recently started her PhD. studies at the same institute. In her dissertation thesis she locates unbuilt spaces in the cities of Komárno and Štúrovo and tries to determine their potential. At work she designs studies of cycling transport and cycling roads projects, to improve ways of public transport in Slovak cities.

SOTSGOROD IN POST-WAR SOVIET URBAN LANDSCAPE

Nikolai VASSILIEV

Post doctor (2012)

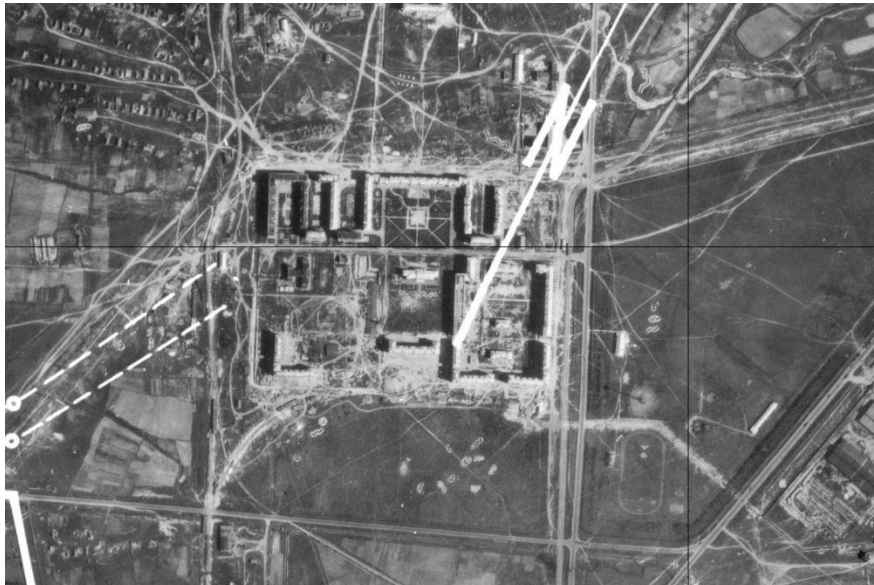
Russian Academy of Architecture and Construction Sciences Architecture

Theory and History Research Institute (NIITAG RAASN), Russia

www.docomomo.ru

n.vassiliev@docomomo.ru

A study focused on phenomenon of *Sotsgorod* – socialistic city in real urban planning and architecture studies of 1930s-50s was pretty different to Nikolay Milyutin concept as he described in his eminent book (1930). So far, sotsgorod not only inherits a traditional Russian planning and social principles of so-called ‘sloboda’, but during decades became an almost universal spatial unit of contemporary city in Russia and many post-USSR countries. Back in middle of XX century, sotsgorod planning principles was a mixture of three key aspects and factors: ministry- and industry-based planning economy (including so-called combines), garden-city ideas adapted to new communal living social structure and principle of architectural ensemble in Soviet urban planning of 1930s. Most of these developments was based on modern urban planning ideas of ‘designed society’ but were covered by different architecture style ‘clothes’ in accordance to overall cultural policy in 1930-1950s. A key implementation of this principles is dated both to pre-war and first post-war decades (when it was exported abroad), both in highly-developed (like Ukraine, Belorussia, Georgia and western parts of Russia) and new ‘colonized’ areas like Urals or Siberia. It appears not only in borders of Russia but all over the continent – from Central Europe to China where such urban planning principles forms a core parts of many industrial-based settlements. It is part of now missing school (even in Russia completely replaced by an international modern planning based on Athens Charter principles) and was a part of cultural, economic and political exchange in CMEA. For architectural and urban history of many countries is still a missing part due a relatively young age and, in some cases, political context misrepresenting overall appreciation of post-soviet heritage. Notwithstanding of significant environmental differences, various economic sectors and starting conditions now sotsogorod can be considered as one of the basic urban planning units (including not only spatial but also a social structure). This units form almost universal typology, bigger industrial cities contain now a few of such units, usually not forming a bigger urban fabric but nearly disconnected parts, similar to traditional division of Russian cities from medieval times. For dozens of cities is also forms a ‘historical’ core of the settlement and only in 2010s modern (constructivist and so-called post-constructivist or art-deco) architecture started to be perceived as historical and important. It raised a new questions among professionals and general public about revalorization and preservation strategies of this heritage.



City of Kazan Aviation Plant Sotsgorod. Aerial view. 1940s

REFERENCES

- Vassiliev, N.; Ovsyannikova, E. (2013) *Architecture of Moscow of New Economic Policy and First Five-year Plan Time*. (Moscow, Restavratsia-N)
- Composite authors. B. R. Vipser Readings-2014 // Vassiliev, N. (2015) *Revisiting Le Corbusier Planning Ideas Reception in USSR Pushkin State Fine Arts Museum*, (In Russian)
- Composite authors, T. G. Malinina (concept). Mass Housing As Form Of Creativity. The Role Of Social Engineering And Creative Ideas In Designing Living Enviroments Experience Of 20th Century And Challenges Of 21 Century // Vassiliev, N. (2015). *Evolution of Planning Typologies in Soviet Mass Hosing of 1920s-1930s* pp.110-121. (Moscow, BooksMArt)

Nikolai Vassiliev (born 1982)

DOCOMOMO Russia Secretary General. Participant of The International Expert Workshop on UNESCO "Serial Transnational World Heritage Nomination Of Socialist Post-War Architecture In Eastern And Central Europe" (2016). Studied in Moscow Stroganov University of Applied Arts (2000-2004) and Russian Academy of Architecture and Construction Sciences Architecture Theory and History Research Institute (NIITAG RAASN), 2004-2007, PhD (2012). Historian of architecture, design and urban planning. Author of books and articles on Russian and world practice of 1920-1980s. Deputy Head of Urban Research Laboratory in Moscow Architecture Institute (2005-2009) Russian Team Coordinator of "Moskonstruct" EU Project (2008-2010). Expert for "RKM – Save Urban Heritage" EU Project (2010-2012) State Pushkin Fine Art Museum (2010-2011) "Progressor" urban development and strategic consulting (2006 – present) Moscow Design Museum curator (2012 – present) Co-Author of Moscow avant-garde architecture books (Moscow Avantgarde of 20-30s. Guidebook. 2011; Moscow Architecture of New Economic Policy and First Five-Year Plan, 2013; Russia Highrise, 2014; Igor Vassilevskij, 2016; Boris Velikovskiy, 2017). Architecture and urban planning workshops tutor.Co-author of Kurortograd exhibition and research project focused on Black Sea sea-resorts architecture heritage.

BUILDING OR A BUILDING PLOT?

Veronika Vicherková

PhD. student

Department For History and Theory of Architecture

Faculty of Architecture Czech Technical University Prague, Czech Republic

<https://www.fa.cvut.cz/Cz/Ustavy/15113>

vervicher@gmail.com

Transgas - former telemetric control center of International gas pipeline Transgas and administrative department of The Ministry of Fuel and Energy. The ensemble of buildings was built since 1965 and finished in 1978. The primary purpose was the headquarters of Prague gasworks, but the latter was accomplished with the telemetric dispatch building of the international gas pipeline and became the seat of the Ministry. It is situated in the very center of Prague, and by its overall design - unusual mixture of cultivated High-tech and machine details with the ideas of the New Brutalism - and with its special compound urban settlement, it builds up a spot of difference, but not unimpressive. Nowadays the site is going to be demolished and rebuild. Some experts appreciate¹ the outstanding architectural quality of these buildings and the rare performance of experimental tendencies in urbanism. In the contrary some others criticize it as an inappropriate relict of past era, and a blemish of historical town. Now we are facing the question, weather such approach to post-war buildings is an honest attempt to “repair the mistake” in the compact urban-grit, or if there is usual goal to gain the highest profit from each meter square of the plot, reused for the new administrative development. Or is there not even a flavor of ideological ostrakismos?

1. After developers claimed to demolish the Transgas building, it was made even a proposal to protect it by declaring it a cultural monument. The settlement belongs to the most radical introduction of that style in former Czechoslovakia. The attempt nevetherless failed, but still the buildings are considered as an architektura icon.



Original proposal model, wood-cut, 1972.

REFERENCES

- Vicherková, V. In memoriam Domu československých dětí i jeho autora Klub za starou. (Prague)
Vicherková, V. (2015). Příklad ÚTB. Proměny hodnoty architektonického díla v čase. (Prague)
Vicherková Veronika (2015). České mozaikářství. In: KRACÍK ŠTORKÁNOVÁ, Magdalena, ed. a kol. Opus musivum: mozaika ve výtvarném umění. (Únětice: Art & Craft Mozaika)
Vorlík Petr, Pavel Miroslav, Vicherková Veronika et al. (2016) Architectural-Historical Survey hotel and transmitter. (Prague: Ještěd)

Veronika Vicherková (born 1981)

Faculty of Humanities, bachelor degree – abs. 2008, Bachelor's thesis: Modern Czech Mosaics as an Artistic Means and as an Expression of Society Faculty of Arts (FF), Institute of Art History, Master degree, abs. 2014. Diploma thesis: Modern Czech mosaic art as a specific kind of art in architecture the second half of the 20th century Since 2014 – till now – Department for History and Theory of Architecture FA CTU Prague – Thesis topic - Post – war Architecture as Heritage, Art in the Post-war Architecture. Since 2009 cooperation with National Heritage Institute. Since 2010 member of Club For the Old Prague (civic organisation for the heritage care since 1900) – since 2012 member of Domestic Council of The Club. Since 2015 member of Czech party of DoCoMoMo International and of Working Party for Post-war architecture of the Czech national Icomos Committee.

**MODERN LEISURESCAPES IN EROSION: SEARCHING FOR NEW REGIONAL CONCEPTIONS
ON THE BALATON DEVELOPMENT HERITAGE**

Domonkos WETTSTEIN

PhD candidate

Department of Urban Planning and Design, Faculty of Architecture

Budapest University of Technology and Economics, Hungary

www.wettstein.hu / www.urb.bme.hu

wettstein@urb.bme.hu

„Social origin and positions – as it is said at Lake Balaton – are left in the changing room with the clothes“. It especially concerned Lake Balaton in the 60s, where, in the spirit of consolidation after the revolution of 1956, wide range of social levels could take a rest together, while, as an even wider gap on the iron curtain, it also became the popular meeting point of the East and West German tourists. The development of Lake Balaton started in the late 50s, just at the same time with the finish of the ideological pressure of the Social Realism and legitimacy of the modern architecture, therefore, the new recreation facilities provided the possibility of inventive formal experiments in the special context of urban-rural situation with low budget and limited technical possibilities for the young generation of architects who came out after the war. The planners' special aim was the social, environmental and practical integrity of the regional development that was reflected by the complex aesthetic concepts of the recreation facilities. Charles Polónyi, the Chief Planner of the south shore of Balaton and a member of the Team 10 presented the first results of the development as a needful “primitive” way of modern architecture at the CIAM Congress in Otterlo in 1959 and the plan won the UIA Abercrombie Prize in 1965. The subject of the paper is the development progress in the frame of the first Balaton Regional Plan (1958-1978). The study compares the initial planning idea and its late realization project (Balaton Central Development Program) after the introduction of “The New Economic System” in 1968. The paper demonstrates the constantly changing tourism policy that forced the increase of the scale of tourism and led to the differentiation of the integrated planning concept. The paper examines the recent state of the heritage. After the change of regime in 1990 the economic and political alterations led to the spread of urbanisation and resulted in the even more ambivalent appearance of the scenic framework of recreation. Analysing the legacy's recent positions as functional and aesthetic metamorphosis in the context of new regional development projects, the paper searches for new connotations and special ways for rehabilitations. The lightsome and abstract regional modernity of the sixties was eroded by local-vernacular mixture of elements reflecting the changing interest of tourism and the transforming regional idea as both institutional and aesthetic conceptions.



Landscape erosion. photo: Varga Norbert

REFERENCES

- Moravánszky, Á. (ed.) (2017). *East West Central. Re-building Europe, 1950-1990. Re-Scaling the Environment*. (Basel: Birkhäuser)
- Zinganel, M., Beyer, E., Hagemann, A. (eds.) (2003). *Holidays after the fall. Seaside Architecture and Urbanism in Bulgaria and Croatia*. (Berlin: Jovis)
- Polónyi, K. (1962). *An Architect Planner on the Peripheries*. (Budapest: Foundation for Political Culture)

Domonkos Wettstein (born in 1985)

is an architect, his doctoral research theme: Recreation and regional conceptions of Lake Balaton. He graduated at Budapest University of Technology and Economics (BME) Faculty of Architecture; as a scholarship holder he has attended the University Liechtenstein in Vaduz. In 2009 he won the first prize of the National Student Scholars Conference. He started doctoral studies at the BME Csonka Pál Doctoral School in 2010. In 2013-14, and in the frame of the Swiss Government Excellence Scholarships Program he was a visiting scholar at the Swiss Federal Institute of Technology in Zurich (ETH Zürich), at the Institute for the History and Theory of Architecture (GTA ETHZ). Since 2014, he is an assistant at the BME Department of Urban Planning and Design.

RZESZÓW LANDSCAPE IN YEARS 1945-1989

Agnieszka WÓJCIK-POPEK

PhD student

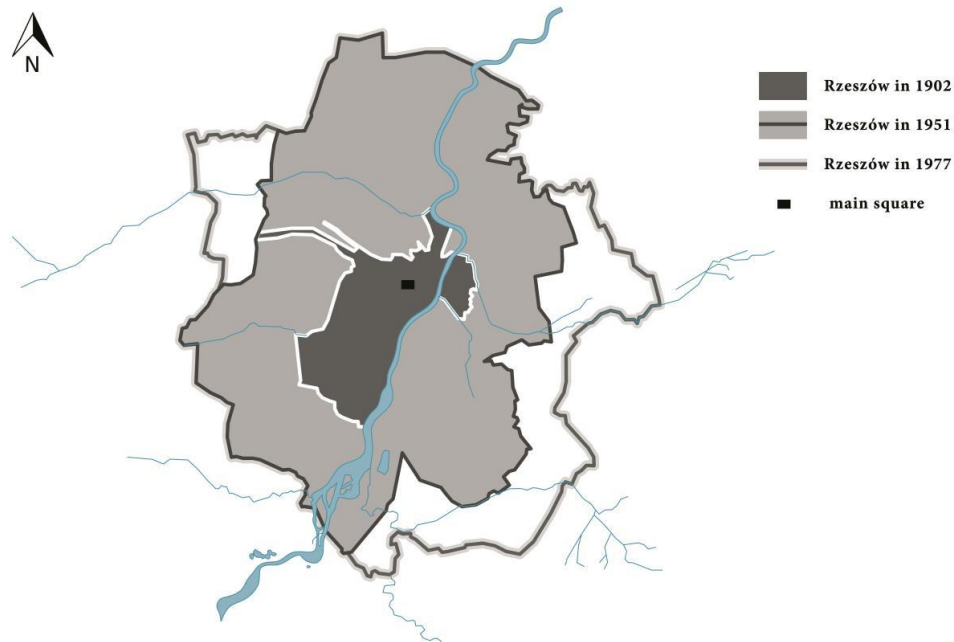
Institute of Landscape Architecture, Faculty of Biology and Agriculture

University of Rzeszów, Poland

www.wbr.ur.edu.pl

awojcik.urz@gmail.com

At the beginning of XX century Rzeszów was a small, meaningless county city under the govern of Austro-Hungarian Empire with population of circa 24000. After regaining independence in 1918 economic investments started. It turned out that settlement of Central Industrial Region in southern Poland (abbr. COP, from Polish Centralny Okręg Przemysłowy) was very important for future city development. Vast infrastructural investments were interrupted by World War II. They were continued in the post-war period. The city became an important centre of industry (especially aircraft engines construction). Therefore it attracted many people, that decided to settle there. Economical growth went along with demographic and administrative changes. Rzeszów became a capital of voivodeship. During 15 years it population doubled and reached almost 70 thousands in 1960. Very rapid socio-economic development led directly to changes in the city land management. Many new buildings, especially governmental were built. The education and hospitality sector development was slower. At first schools and hospitals were housed in abandoned buildings. Currently Rzeszów is a big, vibrating city in south-eastern Poland. Since 1945 it's area, due to administrative decisions, has enlarged significantly. Rzeszów has absorbed many surrounding villages that became city districts. However their landscape is changing slowly. Many of former villages still has very strong rural character, continuing traditional way of land management. They are adjacent to mass housing neighbourhoods, creating disharmony in the landscape. The aim of the research is to determine and describe changes in spatial development of Rzeszów city in years 1945-1989, during the Polish People's Republic period. The spatial scope of the research is limited by the boundaries of the municipality of Rzeszow city in 1989. Methodology of research consists of fieldwork and archival data analysis. Field work is conducted mainly as a detailed photographic record of current state of selected areas of the city. Research is based on comparative analysis of archival cartographic and iconographic data.



Spatial development of Rzeszów in years 1902-1989. Fig. by A. Wojcik.

REFERENCES

- Franciszek, K. (1985). *Tamten Rzeszów*. (Rzeszów: Krajowa Agencja Wydawnicza)
- Klimczak, P. & Paszkiewicz, J. (2012). Studium rozwoju aglomeracji rzeszowskiej. In: Malikowski M. (ed.) *Rzeszów w XX-leciu III RP*. (Rzeszów: Wydawnictwo Uniwersytetu Rzeszowskiego)
- Wojcik Agnieszka (2016). Influence of urbanization on heritage register sites. Rzeszów manor-garden ensembles changes over time. In: Kołodziejczyk P., Kwiatkowska-Kopka B. (ed.) *Landscape as impulsion for culture. Cracow landscape monographs, t. 3, Problems of protection and sharing*. (Krakow: Institute of Archeology Jagiellonian University in Kraków, Institute of Landscape Architecture Cracow University of Technology)

Agnieszka Wójcik-Popek (born in 1990)

Msc. Eng. Agnieszka Wojcik-Popek is a landscape architect. She graduated from Cracow University of Technology in 2014. Currently she works at University of Rzeszow, associated with the Institute of Landscape Architecture. Paralelly she continues her studies as a PhD student at Cracow University of Technology (Department of Architecture). Her scientific interest are influence of green areas on city structure and standard of living, historic relics in urban structure and intangible cultural heritage hidden in landscape. Her thesis topic discusses green areas as a chance of urban districts regeneration. She also designs small graphic forms.

**POST-WAR URBAN MONUMENTS:
EXPLORING THEIR IMPACT ON THE PUBLIC SPACES IN BULGARIA**

Veneta ZLATINOVA-PAVLOVA

Post doctor (PhD in 2016)

Department of Urban Planning

University of Architecture, Civil Engineering and Geodesy, Sofia, Bulgaria

www.uacg.bg

zlatinova_far@uacg.bg

Following the principles of modernism and the ideas of the so-called “socialist realism”, the post-war architects in Bulgaria introduced the synthesis of arts in architecture and in urban planning. The implementation of these ideas in the field of urban design is still visible in a large number of major public spaces in Bulgarian cities. After the Second World War, the new state authority in Bulgaria started to use the monumental art as an instrument for strengthening its influence on the wide public and due to the large use of it in the following decades, not only the number of sculptural decorations raised, but also the style and the symbols behind the urban monuments evolved in different directions. The large-scale urban monuments from that period are usually located in major public spaces – on main city squares, in urban parks or on hills overlooking the urban areas. Nowadays they still occupy important central spaces and act as city marks and create their identity although the citizens often do not share the ideas behind their symbolism, disagree with their meaning or even dislike their style. In the past two decades post-war urban monuments have become one of the most controversial elements of public spaces and represent one of the challenges that city planners and city management need to face in the forthcoming projects for renovation of these major public spaces. This paper presents an overview of the different typologies by style, location or significance of urban monuments from the post-war years and explores their urban characteristics and influence on the urban environment. Following a historical approach it summarizes the previous experience, presents a critical review of the past and current practices and underlines their relations to the context. Its aim is to provide clear, structured and helpful information for decision makers and planners dealing with public spaces and the environment of urban monuments that extends the meaning of urban design and composition.



National Palace of Culture and the monument "1300 Years Bulgaria" in Sofia in the 80's source: <http://zheleva-martins.com/wp-content/uploads/2015/01/NDK1.bmp>

REFERENCES

- Ditchev, I. (2017). *In Memory of the Monument*. Семинар БГ, 15.
- Vukov, N., Toncheva, Sv. (2007). Town Squares and Socialist Heritage: the Reworking of Memorial Landscapes in Post-socialist Bulgaria. (pp. 121-136) In: Schröder-Esch, S., Ulbricht J.(eds.). *The Politics of Heritage and Regional Development Strategies. Actors, Interests, Conflicts*. HERMES Project, vol. 2. (Weimar: Bauhaus-Universität)

Veneta Zlatinova-Pavlova (born in 1979)

Veneta Zlatinova is MSc in Architecture, PhD in Urban and Spatial Planning, a post-doc researcher and a senior assistant professor at the Department of urban Planning, University of Architecture, Civil Engineering and Geodesy, Sofia. After the successful defence of a PhD thesis focused on the development of railway station areas in some large Bulgarian cities, she widened the scope of her research into the field of mobility landscapes and public spaces. She currently teaches disciplines related to urban and landscape planning, spatial composition and urban design to students in the programmes of Architecture and in Urban planning. The author has interests in the spheres of urban mobility, urban regeneration and integration of cultural heritage in the contemporary urban context.



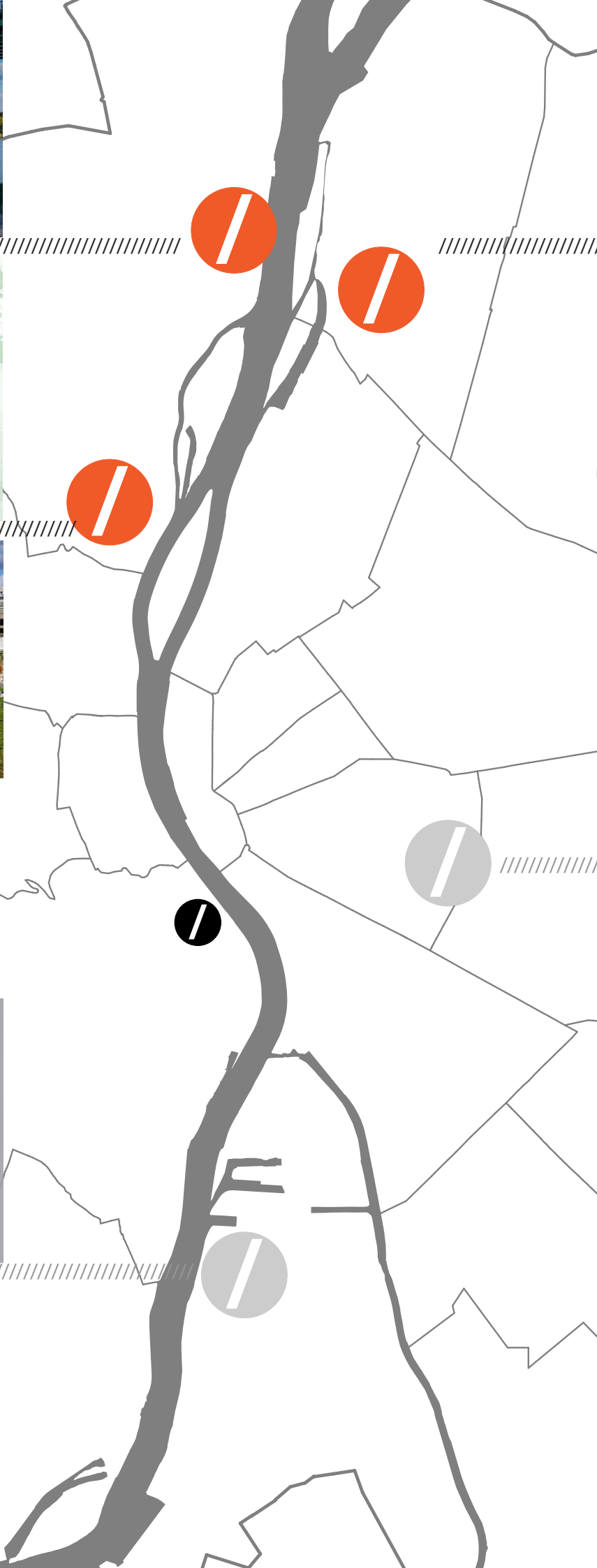
/ RÓMAI BEACH ////////////////



/ ÓBUDA HOUSING ESTATE ////////////////



/ CSEPEL WORKS ////////////////



/ EXCURSION // 10102015 //////////////////////////////////////

/ EXCURSION // 07102017 //////////////////////////////////////

ÚJPEST HOUSING ESTATE /



ÚJPALOTA HOUSING ESTATE /



TELEKI SQUARE /



FACING POST-WAR URBAN HERITAGE IN CENTRAL AND EASTERN EUROPE

Doctoral conference organised by the Department of Urban Planning and Design,
Faculty of Architecture, Budapest University of Technology and Economics (BME).

<http://www.urb.bme.hu/doconf2017>

published by the Department of Urban Planning and Design
at the Budapest University of Technology and Economics
publisher: Melinda BENKŐ PhD

editor: Melinda BENKŐ PhD

design by: Fanni BURÁNYI, Zsófia DOMBROVSZKY, Nóra OSTORÓCZKY, Tamás VÖRÖS DLA

© BME Department of Urban Planning and Design

www.urb.bme.hu

ISBN 978-963-313-271-5

All right reserved.

No part of this publication may be reproduced or transmitted in any form or by any means,
electronic or mechanical, including photocopy, recording or any information storage and
retrieval, without permission in writing from the publisher.

BME Department of Urban Planning and Design

H-1111 Budapest, Műgyetem rkp. 3. K. II/93

+361463-1319,

info@urb.bme.hu



Department of Urban Planning and Design
Faculty of Architecture
Budapest University of Technology and Economics
urb.bme.hu